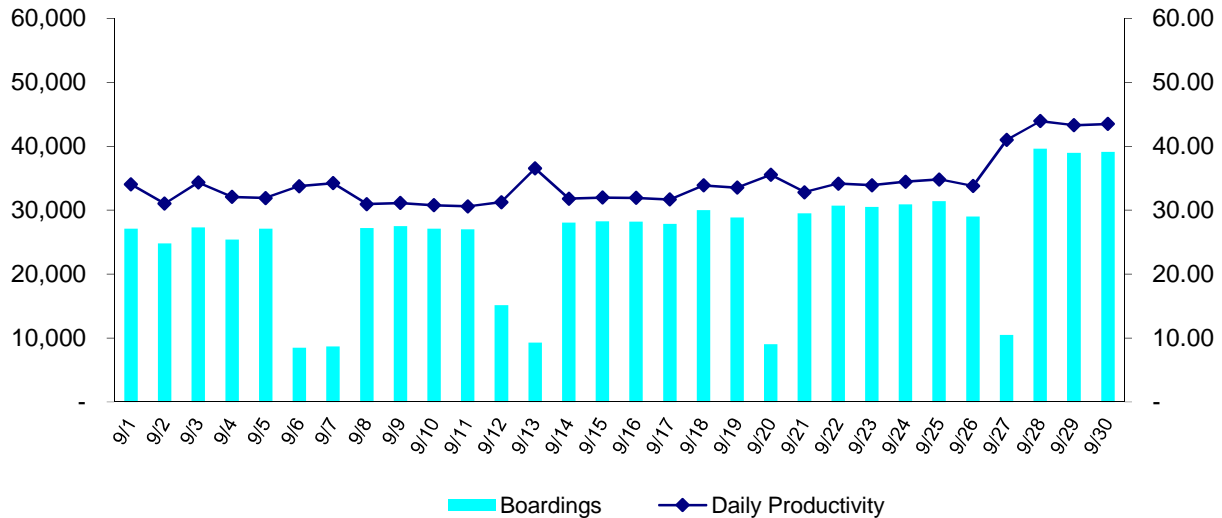


LANE TRANSIT DISTRICT
September 2015 Performance Report
04-November-2015

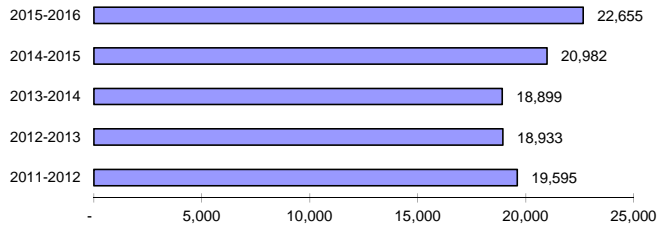
Performance Measure	Current Month	Prior Year's		Current Y-T-D	Previous Y-T-D		Current 12 Month	Prior 12 Month		
		Month	% Change		Y-T-D	% Change		12 Month	% Change	
Fixed Route Service										
Passenger Boardings	772,927	818,163	- 5.5%	2,206,764	2,395,366	- 7.9%	10,456,116	11,255,325	- 7.1%	
Mobility Assisted Riders	14,363	13,797	+ 4.1%	42,541	43,036	- 1.2%	157,983	148,103	+ 6.7%	
Average Passenger Boardings:										
Weekday	29,846	32,234	- 7.4%	28,068	30,746	- 8.7%	34,927	37,582	- 7.1%	
Saturday	25,037	23,527	+ 6.4%	20,002	21,295	- 6.1%	19,398	20,849	- 7.0%	
Sunday	9,201	9,430	- 2.4%	9,732	10,147	- 4.1%	9,730	10,356	- 6.0%	
Monthly Revenue Hours	22,655	20,982	+ 8.0%	64,456	62,166	+ 3.7%	257,070	250,782	+ 2.5%	
Boardings Per Revenue Hour	34.1	39.0	- 12.5%	34.24	38.53	- 11.1%	40.67	44.88	- 9.4%	
Weekly Revenue Hours	5,094	4,776	+ 6.7%	4,818	4,674	+ 3.1%	4,949	4,865	+ 1.7%	
Weekdays	21	21		65	64		256	255		
Saturdays	4	4		12	13		51	52		
Sundays	5	5		15	15		56	54		
Passenger Revenues & Sales										
Total Passenger Revenues	\$584,452	\$586,097	- 0.3%	\$1,610,962	\$1,711,509	- 5.9%	7,197,481	7,221,772	- 0.3%	
Average Passenger Fare	\$0.756	\$0.716	+ 5.6%	\$0.73	\$0.71	+ 2.2%	\$0.69	\$0.64	+ 7.3%	
Farebox Revenue	\$160,465	\$184,609	- 13.1%	\$510,249	\$566,215	- 9.9%	\$1,964,117	\$2,066,591	- 5.0%	
Adult Pass	2,275	2,550	- 10.8%	6,668	7,401	- 9.9%	27,302	27,766	- 1.7%	
Youth Pass	1,162	1,217	- 4.5%	1,986	2,041	- 2.7%	11,816	11,949	- 1.1%	
Reduced Fare Pass	1,177	1,140	+ 3.2%	3,493	3,940	- 11.3%	13,680	14,420	- 5.1%	
Adult 3 Month Pass	267	85	+ 214.1%	557	221	+ 152.0%	2,139	842	+ 154.0%	
Youth 3 Month Pass	142	149	- 4.7%	198	220	- 10.0%	735	690	+ 6.5%	
Reduced Fare 3 Month Pass	52	56	- 7.1%	151	159	- 5.0%	628	637	- 1.4%	
Adult 10-Ride Ticket Book	1,744	1,734	+ 0.6%	4,777	4,864	- 1.8%	17,943	18,042	- 0.5%	
Half-Fare 10-Ride Ticket Book	322	595	- 45.9%	870	1,040	- 16.3%	4,440	4,304	+ 3.2%	
RideSource 10-Ride Ticket Book	447	550	- 18.7%	1,400	1,760	- 20.5%	5,992	6,569	- 8.8%	
Fleet Services										
Fleet Miles	310,876	292,279	+ 6.4%	901,493	872,070	+ 3.4%	3,584,182	3,544,489	+ 1.1%	
Average Passenger Boardings/Mile	2.49	2.80	- 11.2%	2.45	2.75	- 10.9%	2.92	3.18	- 8.1%	
Fuel Cost	\$135,579	\$248,022	- 45.3%	\$459,078	\$777,319	- 40.9%	\$2,072,450	\$3,053,237	- 32.1%	
Fuel Cost Per Mile	\$0.436	\$0.849	- 48.6%	\$0.509	\$0.891	- 42.9%	\$0.578	\$0.861	- 32.9%	
Repair Costs	\$214,262	\$162,393	+ 31.9%	\$652,129	\$608,507	+ 7.2%	\$2,735,794	\$2,518,833	+ 8.6%	
Total Repair Cost Per Mile	\$0.689	\$0.556	+ 24.0%	\$0.723	\$0.698	+ 3.7%	\$0.763	\$0.711	+ 7.4%	
Preventive Maintenance Costs	\$34,242	\$28,349	+ 20.8%	\$89,776	\$88,348	+ 1.6%	\$400,792	\$424,977	- 5.7%	
Total PM Cost Per Mile	\$0.110	\$0.097	+ 13.6%	\$0.100	\$0.101	- 1.7%	\$0.112	\$0.120	- 6.7%	
Mechanical Road Calls	41	28	+ 46.4%	120	145	- 17.2%	516	637	- 19.0%	
Miles/Mech. Road Call	7,582	10,439	- 27.4%	7,512	6,014	+ 24.9%	6,946	5,564	+ 24.8%	
Special Mobility Service										
SMS Rides	15,635	16,431	- 4.8%	48,760	49,388	- 1.3%	193,691	197,441	- 1.9%	
SMS Ride Refusals	8	-	+ 0.0%	8	-	+ 0.0%	10	-	+ 0.0%	
RideSource	7,107	7,588	- 6.3%	22,744	21,448	+ 6.0%	89,484	83,391	+ 7.3%	
RideSource Refusals	2	-	+ 0.0%	2	-	+ 0.0%	4	-	+ 0.0%	

Daily Ridership Recap September 2015

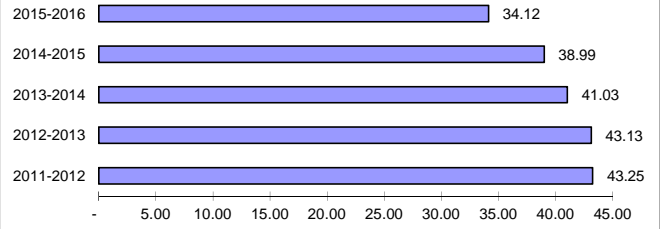
Date	Day	Service	Boardings	Mobility	Revenue	Daily
				Assisted Boardings	Hours	Productivity
9/1/2015	Tuesday	Weekday	27,128	600	797.00	34.04
9/2/2015	Wednesday	Weekday	24,796	520	799.00	31.03
9/3/2015	Thursday	Weekday	27,295	708	795.00	34.33
9/4/2015	Friday	Weekday	25,429	645	793.00	32.07
9/5/2015	Saturday	Saturday	27,121	450	850.00	31.91
9/6/2015	Sunday	Sunday	8,507	247	252.00	33.76
9/7/2015	Monday	Sunday	8,698	212	254.00	34.24
9/8/2015	Tuesday	Weekday	27,232	652	880.00	30.95
9/9/2015	Wednesday	Weekday	27,508	576	884.00	31.12
9/10/2015	Thursday	Weekday	27,137	556	882.00	30.77
9/11/2015	Friday	Weekday	27,010	588	883.00	30.59
9/12/2015	Saturday	Saturday	15,125	411	484.00	31.25
9/13/2015	Sunday	Sunday	9,280	215	254.00	36.54
9/14/2015	Monday	Weekday	28,076	488	883.00	31.80
9/15/2015	Tuesday	Weekday	28,273	467	884.00	31.98
9/16/2015	Wednesday	Weekday	28,195	504	883.00	31.93
9/17/2015	Thursday	Weekday	27,886	474	880.00	31.69
9/18/2015	Friday	Weekday	29,992	568	885.00	33.89
9/19/2015	Saturday	Saturday	28,864	353	861.00	33.52
9/20/2015	Sunday	Sunday	9,028	220	254.00	35.54
9/21/2015	Monday	Weekday	29,521	541	900.00	32.80
9/22/2015	Tuesday	Weekday	30,737	544	900.00	34.15
9/23/2015	Wednesday	Weekday	30,514	545	900.00	33.90
9/24/2015	Thursday	Weekday	30,902	604	897.00	34.45
9/25/2015	Friday	Weekday	31,432	537	903.00	34.81
9/26/2015	Saturday	Saturday	29,037	351	860.00	33.76
9/27/2015	Sunday	Sunday	10,493	201	256.00	40.99
9/28/2015	Monday	Weekday	39,619	568	902.00	43.92
9/29/2015	Tuesday	Weekday	38,960	457	900.00	43.29
9/30/2015	Wednesday	Weekday	39,132	561	900.00	43.48
Totals			772,927	14,363	22,655	34.12



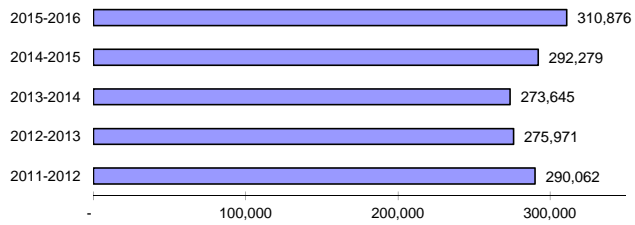
September Revenue Hours



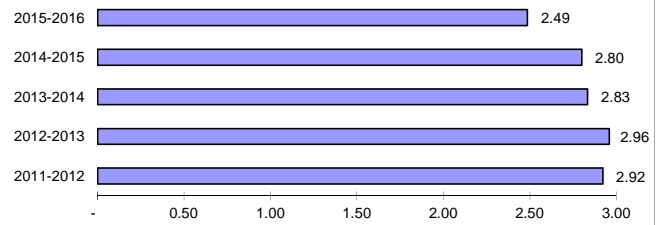
September Passenger Boardings per Revenue Hour



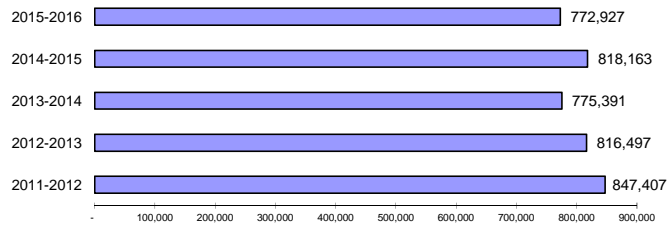
September Fleet Miles



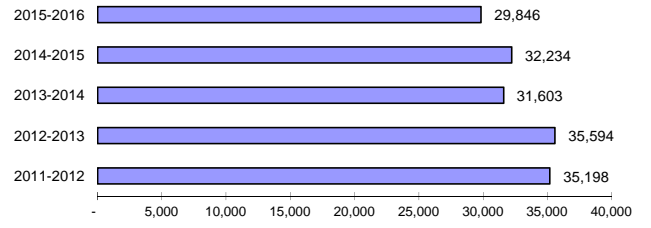
September Passenger Boardings per Mile



September Passenger Boardings



September Average Weekday Passenger Boardings



LANE TRANSIT DISTRICT

Five Year History of Passenger Boardings

