

Santa Clara Transit Station Update

Santa Clara Community Organization Meeting 12/6/2018



LTD.org

Overview / Introduction

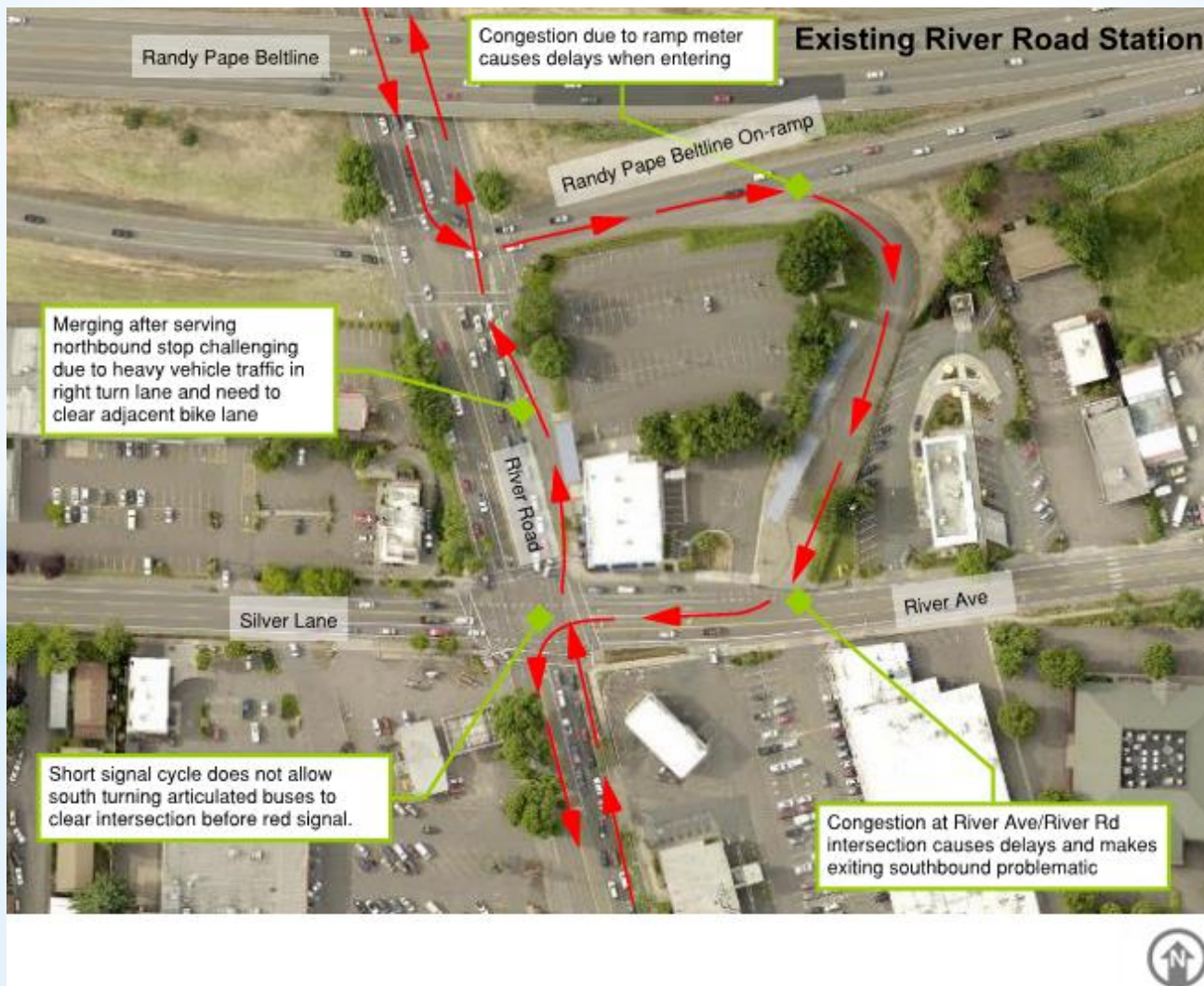


- Purpose
- Design Process
- City of Eugene's River Road Corridor Study
- Questions/Contacts/Resources

Purpose



Purpose



Design Process

Transit Station Features

- Six (6) Bus Bays: Sized to accommodate 60-foot Buses
- Platform Shelter: Individual per Bay, or Combined
- Park & Ride: 60 to 70 spaces, with Drop-off/Pick-up Area
- RideSource: Loading at Bus Bay, Staging at Bus Loop
- Bike Parking: 15 Secure, Additional on site, Future Bike Share
- Service: Backup Bus, Service Vehicles, Trash/Recycling
- Driver Support: Restrooms, Workspace, Storage



Design Process

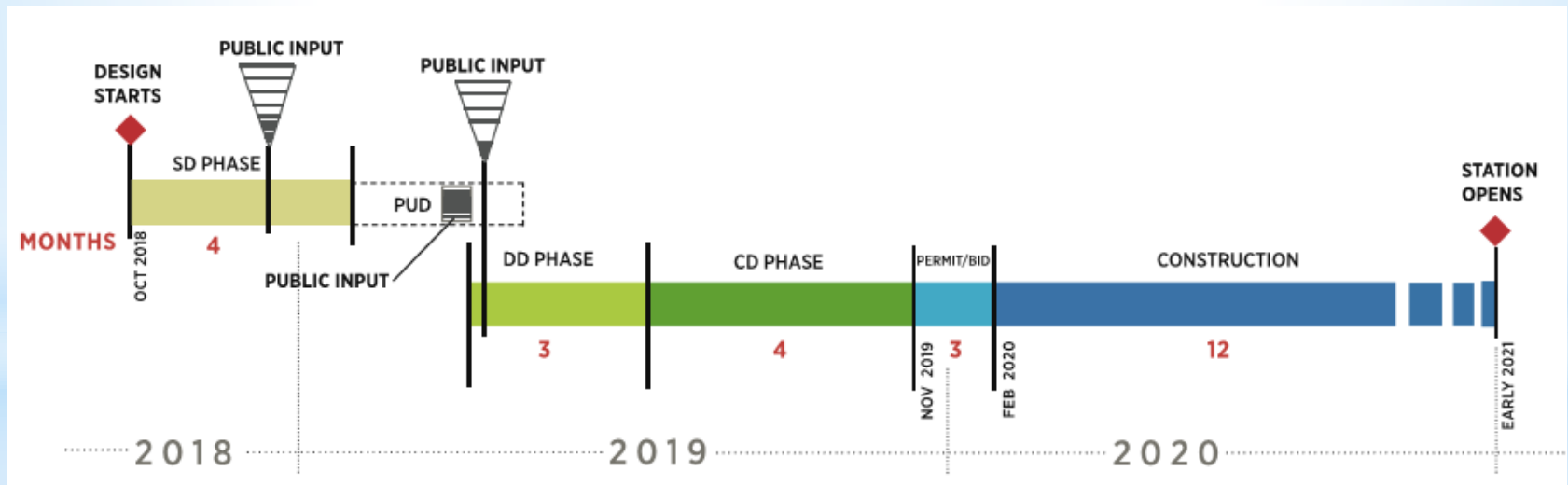
Site Planning – Goals and Objectives

- Safety and Security
- Community Amenity/History of Area/Station Identity
- Relationship of Station to River Road Transit Corridor
- Driver Maneuverability/Dedicated Bus Routes
- Quality/Durability
- Construction Cost
- Flexibility of Future Development Site



Design Process

Process / Schedule



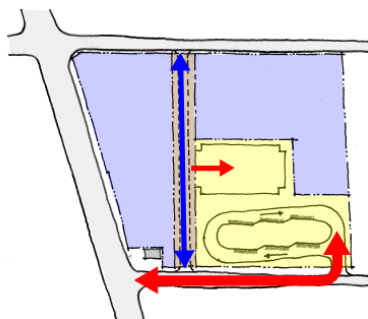
Design Process

Area Map

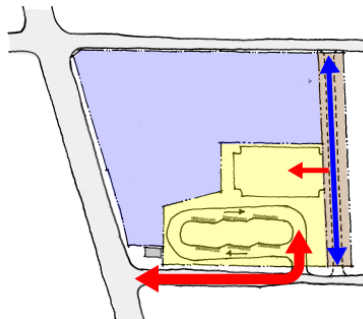


Design Process

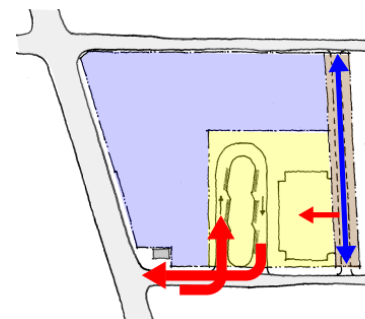
Site Planning Studies



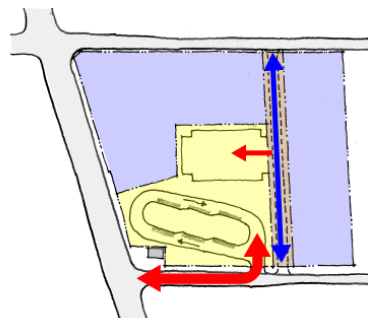
(Previous PUD Site Plan)
Center Connector Road
Development in Front of Station **1**



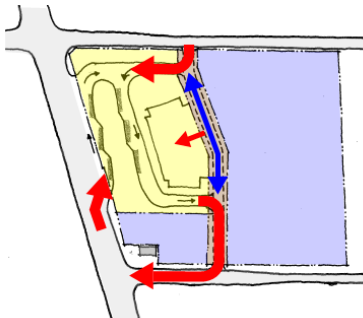
East Connector Road
Development in Front of Station **2**



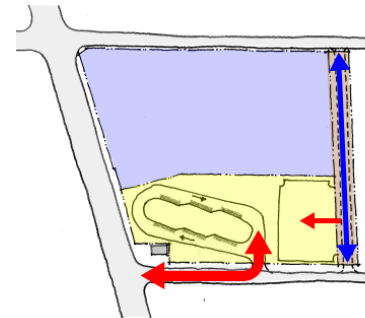
East Connector Road
Development in Front of Station
Direct Green Lane Access **3**



Center Connector Road
Station at River Road **4**



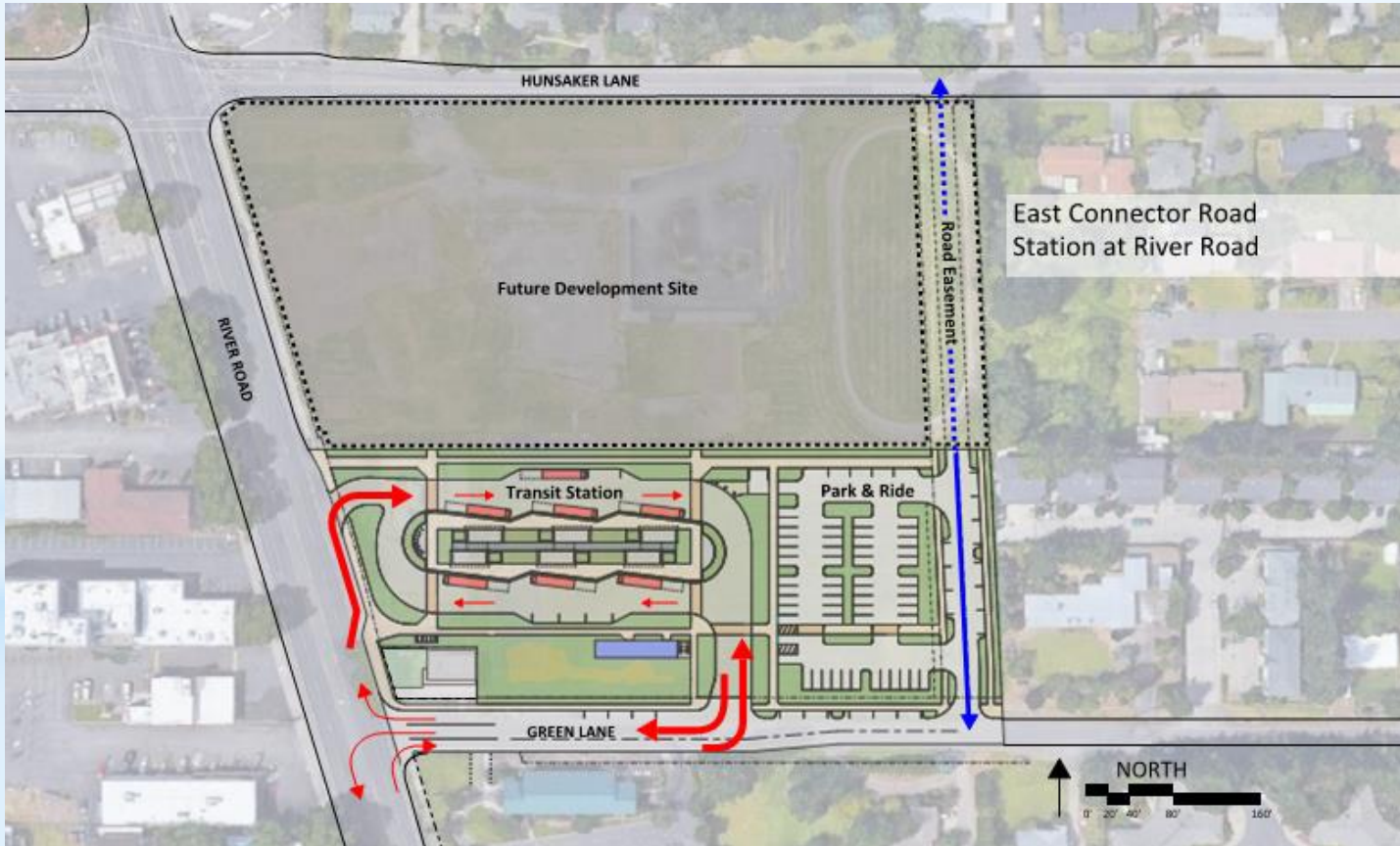
Center Connector Road
Station Boarding at River Road **5**



East Connector Road
Station at River Road **6**

Design Process

Preferred Site Plan



Design Process

Site Plan Detail



Design Process

Station Character



Design Process

Station Character



Design Process

Station Character



Design Process

Station Character



Design Process

Station Character



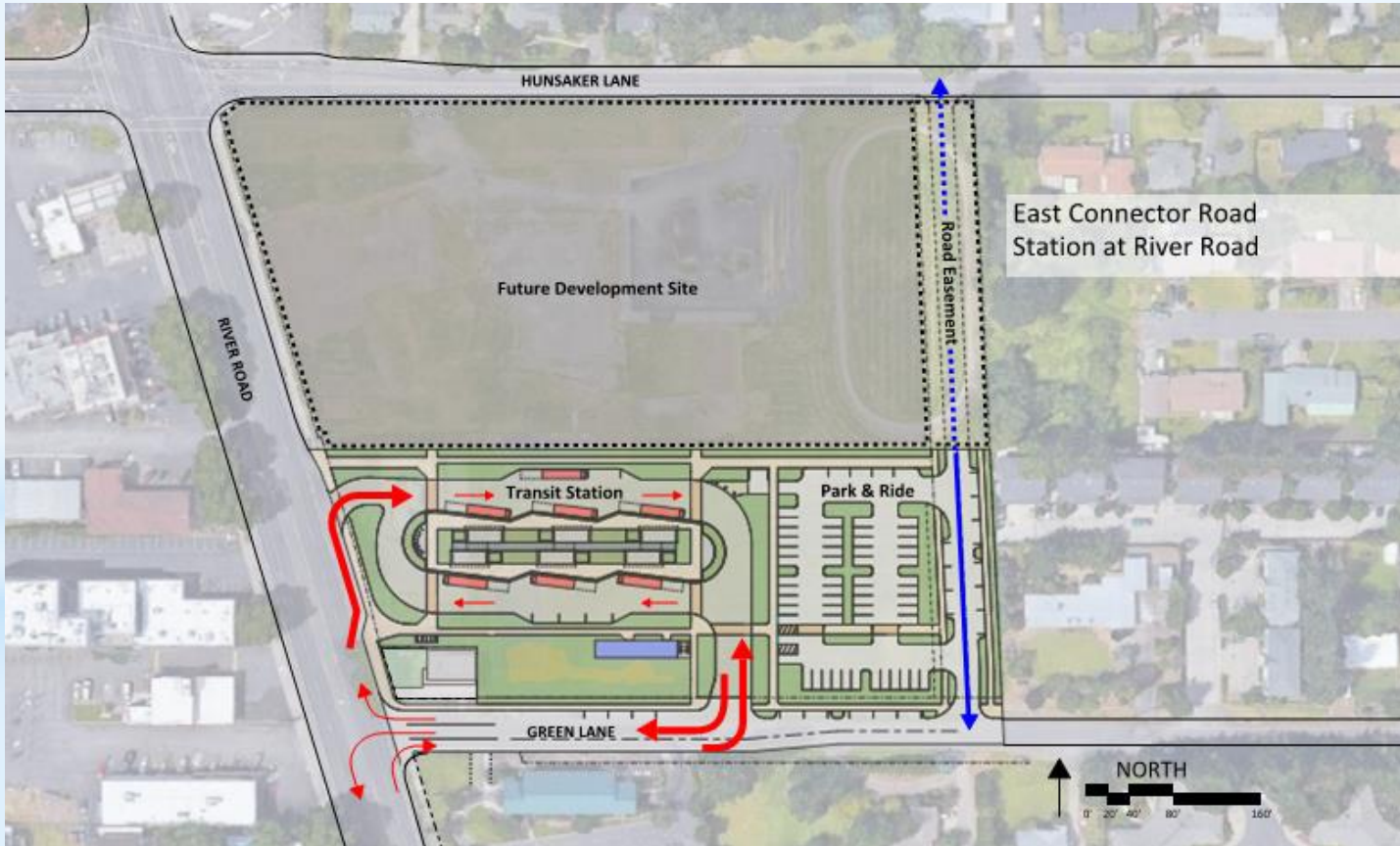
Design Process

Station Character



Design Process

Preferred Site Plan



Questions / Contacts / Resources

Project Questions / Comments

- Email – SCTransit@ltd.org
- Phone – 541-682-3240
- Project Manager – Matt Imlach

Available Resources on Additional Projects

- MovingAhead – <http://www.movingahead.org>
- Transit Tomorrow – <https://www.ltd.org/transit-tomorrow>

12/11/2018 – Neighborhood-Applicant Meeting at DaySpring Fellowship from 5:30 – 7:00 p.m



LTD.org