

SURVEYS AND ASSESSMENTS

Survey Basics

Point2point offers survey services free-of-charge to employers in the area who want to get to know their employees' commute habits and what might motivate them to change. This service includes initial and follow-up survey creation, distribution, analysis, and a \$50 gift card raffle for employees who participate in your survey. Being able to quantify their workforce's commute habits and the perceived barriers to using transportation options can greatly help ETCs:

- Use their time more efficiently by focusing on solutions that they know will resonate.
- Measure the effects of their efforts by comparing responses from their initial survey to the follow-up survey.



2. Submit a survey request to Point2point to administer the survey.
3. Send an email notifying employees about the survey.

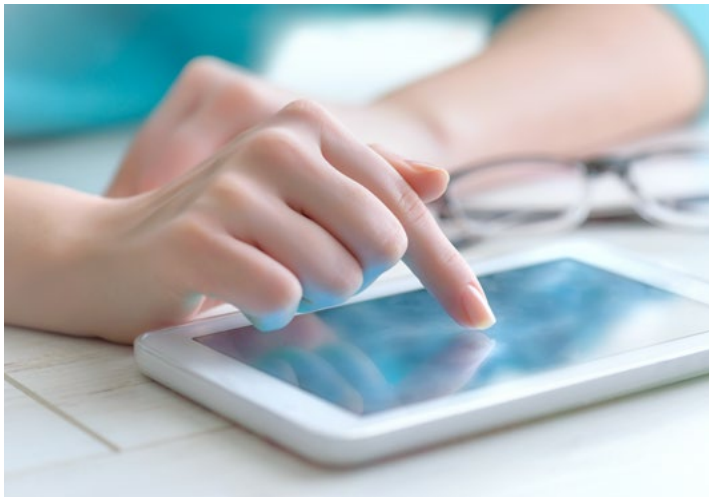
Assessment Basics

In addition to learning about the thoughts and behaviors of your co-workers, it is important to get a clear picture of what amenities and policies your workplace offers and how they might be improved. Taking an inventory of your workplace amenities allows you to:

- Use your time more efficiently by focusing on areas that need the most attention.
- Simplify discussions with your employer regarding transportation program priorities.
- Track your progress by updating the checklist as improvements are made.

How to Start

1. Complete our Transportation Program Checklist.
2. Prioritize improvements by comparing your checklist to the results of your employee survey.
3. Advocate to your employer for the prioritized improvements.



How to Start

To take advantage of our survey service, ETCs should:

1. Talk to their employer about the benefits of conducting a survey of employee commute habits. Share a copy of our sample survey.

Quick Access Links

[Talking to Management](#)
[Sample Emails](#)

[Resource Documents](#)
[Service Request](#)

[Need Help? Request a Consultation.](#)