



# Santa Clara Transit Station Project Update

December 2, 2019

#002

## Current Status - Filing Construction Documents

In September, LTD submitted documents for a Privately Engineered Public Improvement (PEPI) permit, which allows improvements to be made in the public right-of-way. LTD received comments back from the City of Eugene in October and is working with the city to ensure the design is in line with the City of Eugene’s standards. A second PEPI review will be submitted in December.

In October, LTD submitted the Final PUD (Planned Unit Development) Application. The City of Eugene’s Planning Director will review the application to confirm all approval criteria has been met. Once this concludes, public notice of the Planning Director’s decision will be mailed.

In November, LTD submitted for three Property Line Adjustments (PLA). Three property line adjustments are necessary to accomplish the intended lot configuration to accommodate the new transit station and Park & Ride.

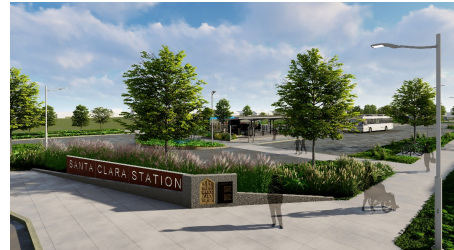
LTD is finalizing all designs for the Santa Clara Transit Station as comments and feedback are received from the PEPI and Final PUD submittals. In December, LTD plans to submit for building permits. A construction solicitation, also called an invitation for bid (IFB), will commence in early January. During this time, all contractors interested in constructing the Santa Clara Transit Station will review the construction documents and submit a bid. Contractors will have time to ask LTD any clarifying questions regarding the project and receive answers. There will be a hard deadline all bids will be due and immediately after, an apparent low-bidder will be announced.

Construction of the Santa Clara Transit Station will begin in the spring of 2020 and will be complete by the end of 2020. The station is planned to open for operations in February 2021.

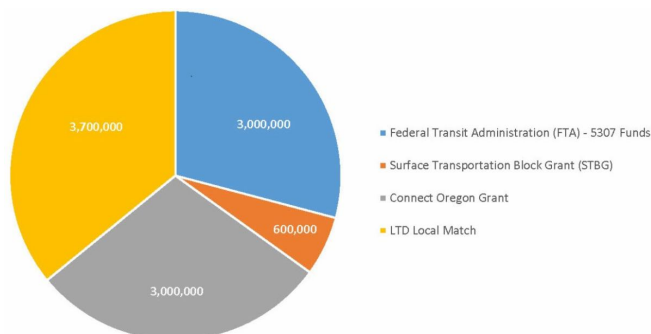
Traffic Impacts: None at this time

## Project Overview

In 2015, LTD purchased an 8-acre undeveloped parcel along River Road between Hunsaker Lane and Green Lane to pursue the design and construction of the Santa Clara Transit Station. This site was selected because the property allows for flexible development of a transit station and Park & Ride. The site provides sufficient space to allow for maximum maneuverability of buses and for better access for riders, pedestrians, cyclists, and people who use mobility devices. The design includes 6 bus bays, 55 parking spaces at the adjacent Park & Ride, on-street parking, secure bike parking, covered station platforms, and a small driver relief building.



## Project Funding



## Information

For More Information: Randi Staudinger, LTD Project Manager, [Randi.Staudinger@LTD.org](mailto:Randi.Staudinger@LTD.org)

For Public Comment: [SCTransit@LTD.org](mailto:SCTransit@LTD.org) or 541-682-3240

