



**Federal Transit Administration (FTA)
Overall Disadvantaged Business Enterprise (DBE)
Goal-Setting Methodology**

**Federal Fiscal Years (FFY) 2020-2022
Goal Period**

October 1, 2019

Submitted in fulfillment of:
Title 49 Code of Federal Regulations Part 26

Table of Contents

I.	INTRODUCTION	3
II.	BACKGROUND	3
III.	FTA-ASSISTED CONTRACTING PROGRAM FOR FFY 2020-2022	3
	Market Area	3
	Anticipated Projects.....	3
	Subrecipients	5
	Categories of Work	5
IV.	GOAL METHODOLOGY	6
	Step 1: Determination of a Base Figure (26.45)	6
	Step 2: Adjusting the Base Figure	7
	1) Past DBE Goal Attainments.....	8
	2) Disparity Studies	8
	3) Other Available Evidence	9
V.	PROPOSED OVERALL DBE GOAL	9
VI.	RACE-NEUTRAL IMPLEMENTATION MEASURES	9
VII.	PUBLIC PARTICIPATION AND FACILITATION	11

DBE GOAL METHODOLOGY

I. INTRODUCTION

Lane Transit District (LTD) sets forth its overall Disadvantaged Business Enterprise (DBE) Goal and corresponding federally prescribed goal-setting methodology for the three-year goal period of Federal Fiscal Year (FFY) 2020-2022 (October 1, 2019 through September 30, 2022), pursuant to Title 49 Code of Federal Regulations (CFR) Part 26 “Participation by Disadvantaged Business Enterprises in U.S. Department of Transportation Programs.” The purpose of the DBE goal setting process is to level the playing field so that DBEs can compete fairly for U.S. Department of Transportation (USDOT) assisted contracts; however, the program must be narrowly tailored in accordance with applicable law.

II. BACKGROUND

LTD is a recipient of USDOT, Federal Transit Administration (FTA), funding. As a condition of receiving this assistance, LTD signed an assurance that it will comply with FTA DBE requirements. In accordance with Title 49 CFR Part 26 provisions, LTD is required to develop and submit an overall Triennial DBE Goal for its FTA-assisted projects.

LTD herein presents its Overall DBE Goal Methodology for FFY 2020-2022.

III. FTA-ASSISTED CONTRACTING PROGRAM FOR FFY 2020-2022

Market Area

The Federal DBE Program requires agencies to implement the DBE Program based on information from the relevant geographic market area—the area in which the agency spends the substantial majority of its contracting dollars.

LTD’s local market for contracts consists of a geographic area that is:

- where a large majority of contracting dollars is expended, and
- where a substantial number of contractors and subcontractors are located and available to submit bids, quotes, or proposals.

LTD’s bidder’s list was reviewed and analyzed to determine where LTD spends the substantial majority of its contracting dollars. This analysis confirmed that the previously recognized market area of Benton, Coos, Curry, Douglas, Josephine, Lane and Linn counties is still valid.

Anticipated Projects

LTD has 16 FTA-assisted projects that are anticipated to be awarded during the triennial period and which were considered in preparing this goal methodology. These projects and their federal share are listed in Table 1.

- Column A lists the name and brief description of each project.
- Column B lists the total estimated cost of each project.
- Column C lists the estimated FTA dollar share for each project.
- Column D lists estimated FTA percentage share for each project.

Table 1

A Project Name/Description	B Total Estimated Project Cost	C Estimated FTA \$ Share	D Estimated FTA % Share
Passenger Boarding Improvements & Systems Facilities Improvements - Improve amenities and support infrastructure at passenger boarding areas such as accessible pathway, shelter, furniture, and/or signage.	\$600,000	\$480,000	80.0%
Santa Clara Transit Station - Construct new station near Hunsaker Lane and River Road in Eugene, including a Park & Ride.	\$8,291,714	\$6,633,371	80.0%
Existing EmX Corridor Improvement - Bus lane and station capacity improvements.	\$5,000,000	\$4,000,000	80.0%
Main-McVay Transit Study - LTD is working in partnership with the City of Springfield to identify the highest priority transit capital improvements along the Main Street Corridor in coordination with the City of Springfield's Main Street Safety Project.	\$294,442	\$235,554	80.0%
Frequent Transit Network Safety and Amenity Improvements - Using results of the Pedestrian Network Analysis (a study that is part of the Comprehensive Operations Analysis called Transit Tomorrow), implement various safety and amenity improvements along the Frequent Transit Network (FTN).	\$1,114,454	\$891,563	80.0%
Bus Wash Improvements - Remove existing bus wash equipment and replace with new.	\$750,000	\$600,000	80.0%
Overhead Door Replacement - Replace all original overhead doors and operators throughout the Glenwood Operational Campus to improve reliability.	\$250,000	\$200,000	80.0%
Bus Gate Improvements - Provide reliable automated bus yard entrance gates that secure the perimeter.	\$550,000	\$440,000	80.0%
ACM Replacement parts - The purchase of replacement parts that are failing and/or unreliable as they have reached the end of their useful lives.	\$616,100	\$492,880	80.0%
Preventive Maintenance - Preventative maintenance on federal assets to improve their performance, safety and longevity.	\$11,900,000	\$9,520,000	80.0%
Safe Routes to School Bike Ped Expansion - The Eugene-Springfield SRTS program provides in-class pedestrian safety to second grade students and in-class bicycle safety education to fifth or sixth grade students throughout the regional school districts.	\$172,146	\$137,716	80.0%
Safe Routes to Schools Regional Program - This project supports funding for three district Safe Routes To School programs in order to maintain the current level of K-8 programming in the 4J, Bethel, and Springfield school districts from FFY 2019-2021.	\$559,967	\$447,974	80.0%
Transportation Options Program - This program provides a variety of positive marketing opportunities for LTD and more importantly provides options for the region's	\$416,352	\$333,081	80.0%

A	B	C	D
Project Name/Description	Total Estimated Project Cost	Estimated FTA \$ Share	Estimated FTA % Share
travelers to use a variety of transportation options in the region. Point2point does extensive year-round outreach and education about how to use the options and does a great deal of education on how to access and trip plan using the LTD fixed-route and accessible services transportation. The face-to-face outreach component provides a human face to the services we provide. Direct services include the management of the Valley Vanpool Program (17 vans), Emergency Ride Home, Drive Less Connect Ridesharing software for Lane County, lead the Business Commute Challenge and the Oregon Drive Less Challenge in Lane County, and lead the Regional Safe Routes to Schools Program.			
UO Gateway Project - LTD will conduct public outreach (SmartTrips) relative to the enhanced EmX service, which will be beneficial to the business community.	\$186,359	\$149,087	80.0%
SRTS Bicycle Parking - Develop short-term bicycle parking at three local school districts to improve the worst bike parking supply as rated in the Safe Route To School Regional Bicycle Parking Assessment.	\$90,852	\$72,682	80.0%
Mobility Management - SRTS - These activities, which will take place within two miles of K-8 schools, may include but are not limited to public awareness campaigns; student sessions on bicycle and pedestrian safety; health and environment; and development of transportation maps.	\$100,300	\$80,240	80.0%
TOTAL	\$30,892,686	\$24,714,148	80.00%

Subrecipients

LTD does not distribute any FTA funds to subrecipients.

Categories of Work

LTD reviewed each project anticipated to be awarded in the triennial period and determined the applicable categories of work applicable for each project using North American Industry Classification System (NAICS) codes. The corresponding dollar values for each NAICS code for each project were summarized for purposes of weighting the categories of work based on the staff estimates. Table 2 provides a summary of the categories of work with estimated dollars for each.

- Column A lists the category of work (NAICS) code and title.
- Column B lists the estimated FTA dollar share for each NAICS code.
- Column C lists the estimated percentage of each NAICS code (the estimated FTA dollars for each NAICS code divided by the grand total of all estimated FTA dollars).

Table 2

A	B	C
NAICS Code Category of Work	Estimated FTA Dollars by NAICS	Estimated FTA % by NAICS
236220 Commercial and institutional building construction	\$5,290,667	21.4%
237310 Highway, street, and bridge construction	\$1,058,569	4.3%
238110 Poured concrete foundation and structure contractors	\$1,111,337	4.5%
238190 Other foundation, structure, and building exterior contractors	\$1,074,132	4.3%
238210 Electrical contractors and other wiring installation contractors	\$1,934,475	7.8%
238290 Other building equipment contractors	\$1,240,000	5.0%
238390 Other building finishing contractors	\$555,669	2.2%
238990 All other specialty trade contractors	\$1,111,337	4.5%
423120 Motor vehicle supplies and new parts merchant wholesalers	\$492,880	2.0%
541613 Marketing consulting services	\$553,383	2.2%
541690 Other scientific and technical consulting services	\$511,162	2.1%
541810 Advertising agencies	\$260,538	1.1%
561790 Other services to buildings and dwellings	\$952,000	3.9%
811111 General automotive repair	\$5,712,000	23.1%
811310 Commercial and industrial machinery and equipment (except automotive and electronic) repair and maintenance	\$2,856,000	11.6%
TOTAL	\$24,714,148	100.0%

IV. GOAL METHODOLOGY

Step 1: Determination of a Base Figure (26.45)¹

To establish LTD's Base Figure of the relative availability of DBEs relative to all comparable firms (DBE and non-DBE) available to bid or submit proposals on LTD FTA-assisted contracting opportunities projected to be solicited during the triennial goal period, LTD followed the prescribed federal methodology to determine relative availability. This was accomplished by assessing the *Certification Office for Business Inclusion and Diversity (COBID) Certification Management System* and the 2016 *U.S. Census Bureau County Business Patterns Database* within LTD's market area for each of the categories of work defined in Table 2.

In accordance with the formula listed below, the Base Figure is derived by:

- dividing the number of ready, willing and able DBE firms identified for each NAICS work category by the number of all firms identified within the LTD market area for each corresponding work category (*relative availability*),
- weighting the relative availability for each work category by the corresponding work category weight from Table 2 (*weighted ratio*), and
- Adding the weighted ratio figures together.

$$\text{Base Figure} = \sum \frac{(\text{Number of Ready, Willing and Able DBEs})}{(\text{Number of All Ready, Willing and Able Firms})} \times \text{Weighted Ratio}$$

⇒ For the numerator: COBID DBE Database of Certified Firms

¹ 26.45 represents Title 49 CFR Part 26 regulatory goal setting methodology reference.

⇒ For the denominator: 2016 U.S. Census Bureau County Business Patterns Database

A concerted effort was made to ensure that the scope of businesses included in the numerator were as close as possible to the scope included in the denominator. The result of the Base Figure calculation is shown in Table 3.

- Column A lists the category of work (NAICS) code and title.
- Column B lists the estimated percentage of each NAICS code (the estimated FTA dollars for each NAICS code divided by the grand total of all estimated FTA dollars) from Table 2.
- Column C lists number of DBEs in the market area for each NAICS code from the Certification Office for Business Inclusion and Diversity (COBID) DBE Database of Certified Firms.
- Column D lists number of all firms (DBE and non-DBE) in the market area for each NAICS code from the 2016 U.S. Census Bureau County Business Patterns Database.
- Column E lists the DBE availability for each NAICS code (the number of DBEs divided by the number of all firms, multiplied by the estimated NAICS percentage).
- The weighted base figure is the sum of the DBE availability for each NAICS code.

Table 3

A	B	C	D	E
NAICS Code Category of Work	Estimated FTA % by NAICS	DBEs	All Firms	Weighted Ratio
236220 Commercial and institutional building construction	21.4%	2	86	0.5%
237310 Highway, street, and bridge construction	4.3%	6	51	0.5%
238110 Poured concrete foundation and structure contractors	4.5%	3	51	0.3%
238190 Other foundation, structure, and building exterior contractors	4.3%	2	7	1.2%
238210 Electrical contractors and other wiring installation contractors	7.8%	1	185	0.0%
238290 Other building equipment contractors	5.0%	0	19	0.0%
238390 Other building finishing contractors	2.2%	2	10	0.4%
238990 All other specialty trade contractors	4.5%	4	98	0.2%
423120 Motor vehicle supplies and new parts merchant wholesalers	2.0%	0	36	0.0%
541613 Marketing consulting services	2.2%	3	51	0.1%
541690 Other scientific and technical consulting services	2.1%	7	64	0.2%
541810 Advertising agencies	1.1%	2	21	0.1%
561790 Other services to buildings and dwellings	3.9%	0	34	0.0%
811111 General automotive repair	23.1%	0	252	0.0%
811310 Commercial and industrial machinery and equipment (except automotive and electronic) repair and maintenance	11.6%	0	65	0.0%
Weighted Base Figure		3.6%		

Step 2: Adjusting the Base Figure

Upon establishing the Base Figure, LTD reviewed and assessed other known evidence potentially impacting the relative availability of DBEs within the market area, in accordance with prescribed

narrow tailoring provisions as set forth under 49 CFR Part 26.45: Step 2, DBE Goal Adjustment Guidelines.

Evidence considered in making adjustments to the Base Figure included Past DBE Goal Attainments and Other Evidence, as follows:

1) Past DBE Goal Attainments

Historical DBE participation attainments provide demonstrable evidence of DBE availability and capacity to perform on LTD projects that are substantially similar to previous years. LTD proceeded to calculate past DBE participation attainments for the three (3) federal fiscal years, for which DBE attainment data is available. The table below reflects the demonstrated capacity of DBEs (measured by actual historical DBE participation attainments) on FTA-assisted contracts awarded by LTD within the last three (3) federal fiscal years.

Table 4

FEDEAL FISCAL YEAR (FFY)	FTA DBE GOAL %	FTA DBE ATTAINMENT %
2015/2016	1.3%	2015/2016
2016/2017	2.2%	2016/2017
2017/2018	3.6%	2017/2018
Median DBE Attainment Within the Last Three (3) Years		2.2%

The median established for the past three years is lower than the Base Figure derived from Step 1; therefore, an adjustment to the Base Figure based on LTD past DBE goal attainments has been made. The adjustment is calculated in accordance with FTA guidance by averaging the Base Figure with the median DBE Past Attainment, as shown below.

Base Figure (A)	3.6%
Median DBE Attainment (B)	2.2%
Adjusted Base Figure [(A+B)/2]	2.9%

2) Disparity Studies

LTD has reviewed the 2016 ODOT Disparity Study and has determined that the type of work is significantly different from LTD projects; therefore, LTD will not be making adjustments to the base figure based on the ODOT Disparity Study.

LTD uses a strictly race-neutral DBE program since the Western States decision. If LTD fails to reach its goal for a complete federal fiscal year, LTD will re-evaluate its DBE program to determine whether contract goals are necessary to achieve the overall goal. If after re-evaluation LTD believes a race-conscious program is necessary, as required by the Western States, LTD will gather evidence to determine if discrimination in the transportation contracting industry is present. LTD will make a determination at that time what type of evidence gathering is appropriate, based on DOT regulations and case law.

3) Other Available Evidence

LTD is not in possession of other information that would have an impact on the DBE goal assessment.

V. PROPOSED OVERALL DBE GOAL

The Proposed Overall DBE Goal for FFY 2020-2022 for LTD FTA-assisted contracts is 2.9%

LTD will implement race neutral measures to achieve this goal, as generally described in the following section. As a part of the prescribed goal-setting methodology, LTD must project the percentage of its Proposed Overall DBE Goal that can be met utilizing race-neutral and race-conscious measures.

Race-Conscious & Race-Neutral Projection

USDOT regulations require that race-neutral methods be used to the maximum extent feasible to reach the DBE overall goal. As LTD is located in the 9th Circuit, we cannot implement a race-conscious program without a disparity study that shows evidence of disparity. Therefore, LTD is unable to set a race-conscious projection and intends to use race-neutral methods to meet the overall DBE goal of 2.9% for FFY 2020-2022 in accordance with Title 49 CFR Part 26.51.

LTD projects that all of the 2.9% DBE goal will be achieved through race-neutral means and that 0% will be achieved through race-conscious means.

RACE-CONSCIOUS & RACE-NEUTRAL PROJECTIONS	
DBE Adjusted Base Figure	2.9%
Race-Neutral Component	2.9%
Race-Conscious Component	0.0%

Due to the emphasis on race-neutral methods, LTD will increase the use the race-neutral measures listed below. LTD will carefully monitor participation during the course of the goal period. At the conclusion of each year during the goal period, LTD will re-evaluate the effectiveness of the race-neutral measures and determine if it is necessary to institute additional race-neutral measures to achieve the goal or if race-conscious methods should be considered.

VI. RACE-NEUTRAL IMPLEMENTATION MEASURES

LTD is currently implementing a number of race- and gender-neutral remedies. In order to outreach and promote the participation of DBEs and small businesses in LTD's FTA-assisted contracting program and to increase the effectiveness of these remedies, LTD plans to continue utilizing existing remedies and will continue to explore other options for consideration based on LTD's success in meeting its overall DBE goals based on these efforts.

LTD will:

- Encourage DBE and other small business contracting community to register and receive solicitation notices through its on-line procurement website:
<https://www.ebidexchange.com/Default.aspx?cid=807be640-28ca-4225-9d2a-764d34b32ef1>
- Host and/or participate in workshops for the DBE and small business contracting community. LTD will attend and participate in vendor fairs hosted by unrepresented groups and other public agencies.

- Unbundle solicitations, provide pre-bid/pre-proposal conferences to afford networking opportunities for primes and subcontractors. LTD will promote and encourage teaming opportunities between prospective prime contractors and the DBE and small business contracting community. Arrange solicitations, times for the presentation of bids, quantities, specifications, and delivery schedules in ways that facilitate DBE and other small business participation.
- Structure solicitations to remove barriers such as the inability to obtain bonding or financing (e.g., by such means as simplifying the bonding process, reducing bonding requirements, eliminating the impact of surety costs from bids, and providing services to help DBEs, and other small businesses, obtain bonding and financing).
- Solicit DBEs and other small businesses participation by carrying out information programs through use of advertisement and other communication methods on contracting procedures and specific contract opportunities (e.g., ensuring the inclusion of DBEs, and other small businesses, on recipient mailing lists of bidders; ensuring the dissemination to bidders on prime contracts of lists of potential subcontractors; provision of information in languages other than English, where appropriate).
- Actively promote the small business conferences, programs, and support services offered by other agencies that have established DBE and other small business programs as a supportive service to help develop and improve immediate and long-term business management, record keeping, and financial and accounting capability for DBEs and other small businesses. LTD will also begin conducting “How to do Business with LTD” and DBE workshops.
- Advise its contracting community of the online directory of certified DBEs, found at the Certification Office for Business Inclusion and Diversity Certification Management System website: <https://oregon4biz.diversitysoftware.com/>.
- Advise the DBE and small business community to participate in ODOT’s related bidding/proposal opportunities at <https://www.oregon.gov/ODOT/Business/Procurement/Pages/HowTo.aspx>. LTD will also encourage DBEs and small businesses to seek the assistance and training through the U.S. Small Business Administration at www.sba.gov.

Fostering Small Business Participation²

LTD has implemented several strategies to foster small business participation in its contracting process. These include the following:

- Conducting “How to do Business with LTD” and DBE workshops.
- On larger prime contracts requiring the prime contractor to consider subcontracting opportunities of a size that small businesses, including DBEs, can reasonably perform, rather than self-performing all the work involved.
- Identifying alternative acquisition strategies and structuring procurements to facilitate the ability of consortia or joint ventures consisting of small businesses, including DBEs, to compete for and perform prime contracts.
- Ensuring that a reasonable number of prime contracts are of a size that small businesses, including DBEs, can reasonably perform.
- Provide outreach to current LTD contractors or past LTD contractors who may qualify for DBE-certification by encouraging them to seek and obtain DBE-certification.

² See Title 49 CFR Part 26 Section 26.39 “Fostering Small Business Participation.”

VII. PUBLIC PARTICIPATION AND FACILITATION

In accordance with Public Participation Regulatory Requirements of Title 49 CFR Part 26, minority, women, local business associations, and community organizations within LTD's market area have been consulted and provided an opportunity to review the triennial goal analysis and provide input.

LTD issued a Public Notice ([Attachment 1](#)) on LTD's website announcing the Proposed FTA Overall DBE Goal-Setting Methodology for FFY 2020-FFY 2022. The notice informed the public that the proposed goal and rationale was available for inspection at LTD's principal office during normal business hours and LTD accepted comments until October 25, 2019. The notice announced a public webinar to provide information about the DBE Program and Overall DBE Goal-Setting Methodology for FFY 2020-FFY 2022 and included instructions to participate. The public notice was also posted in a local newspaper.

LTD reached out to local minority, women, and community business organizations to invite them to participate in the public webinar. Each organization was contacted multiple times via email, phone call, and e-blast ([Attachment 2](#)). LTD hosted the public webinar on October 16, 2019. LTD presented a brief overview of the DBE Program, the goal and methodology for FFY 2020-22 and answered any questions ([Attachment 3](#)). A summary of all outreach efforts and comments received are provided ([Attachment 4](#)). LTD received one (1) comment on the goal. No comments on the goal methodology resulted in an adjustment to the goal for this triennial period.

ATTACHMENT 1: Website Notification

9/26/2019

Disadvantaged Business Enterprise Program > Lane Transit District



[HOME](#) > [ABOUT US](#) > [BUSINESS CENTER](#) > [PROCUREMENT](#) > [DISADVANTAGED BUSINESS ENTERPRISE PROGRAM](#)

Disadvantaged Business Enterprise Program

Federal Fiscal Years 2014-2016

July 2015 Revision to Program and Policy Documents

On July 15, 2015, Lane Transit District (LTD) presented revisions to its DBE Program and Policy documents to its Board of Directors, identifying a new Disadvantaged Business Enterprise Liaison Officer (DBELO), in accordance with FTA recommendations that the DBELO not be an employee in the finance nor procurement departments of an agency. The Board approved the revisions, and LTD's new DBELO is Roland Hoskins, Director of Administrative Services.

LTD has established a Disadvantaged Business Enterprise (DBE) Program in accordance with regulations of the U.S. Department of Transportation. It is the policy of the District to ensure nondiscrimination on the basis of race, color, sex, or national origin in the award and administration of the U.S. Department of Transportation-assisted contracts. It is the intention of the District to create a level playing field on which DBEs can compete fairly for contracts and subcontracts relating to the District's construction, procurement, and professional services activities.

Lane Transit District's proposed overall goal for Federal Fiscal Years 2014-2016 is 4.63 percent (4.63%) of FTA-funded contracting activities, exclusive of FTA funds to be used for the purchase of transit vehicles. Methodology used to formulate this goal is described in the program documents. LTD intends to meet this entire goal using race/gender neutral measures.

The complete updated DBE Program and overall annual goals analysis are available for review. [Click here](#) to download the documents.

NOTICE TO PUBLIC – September 26, 2019

LTD's proposed overall goal for the upcoming triennial period, October 1, 2019, through September 30, 2022, is 2.9 percent (2.9%) for FTA-funded contracting activities. The Methodology used to formulate this goal is available for inspection at the address below.

Lane Transit District – Administrative Offices
3500 East 17th Avenue
Eugene, OR 97403

LTD will be hosting a webinar to review the DBE Triennial Goal Methodology on Wednesday, October 16, at 10 a.m. Details regarding the event and how you can participate can be found [here](#). If you have any comments, questions, or would like further information regarding this program, please contact the DBE Liaison Officer, Collina Beard, by telephone at 541-682-6158, or fax at 541-682-6188.



Lane Transit District

Notice to Public - September 20, 2019

LANE TRANSIT DISTRICT

FEDERAL TRANSIT ADMINISTRATION

DBE GOAL FEDERAL FISCAL YEARS 2020-2022

In accordance with 49 CFR Part 26.45(g), Lane Transit District (LTD), a recipient of U.S. Department of Transportation (DOT) assistance, announces a proposed Federal Transit Administration (FTA) Disadvantaged Business Enterprise (DBE) goal of **2.9%** for the triennial period October 1, 2019 through September 30, 2022. This race-neutral goal represents the percentage of work to be performed by certified DBE firms on LTD's FTA-assisted projects during the triennial period.

**LTD will be hosting a webinar for public participation on
Wednesday, October 16th from 10:00 a.m. to 11:00 a.m.**

[Join Microsoft Teams Meeting](#)

[+1 805-319-4492](#) United States, Santa Barbara (Toll)

Conference ID: 174 400 80#

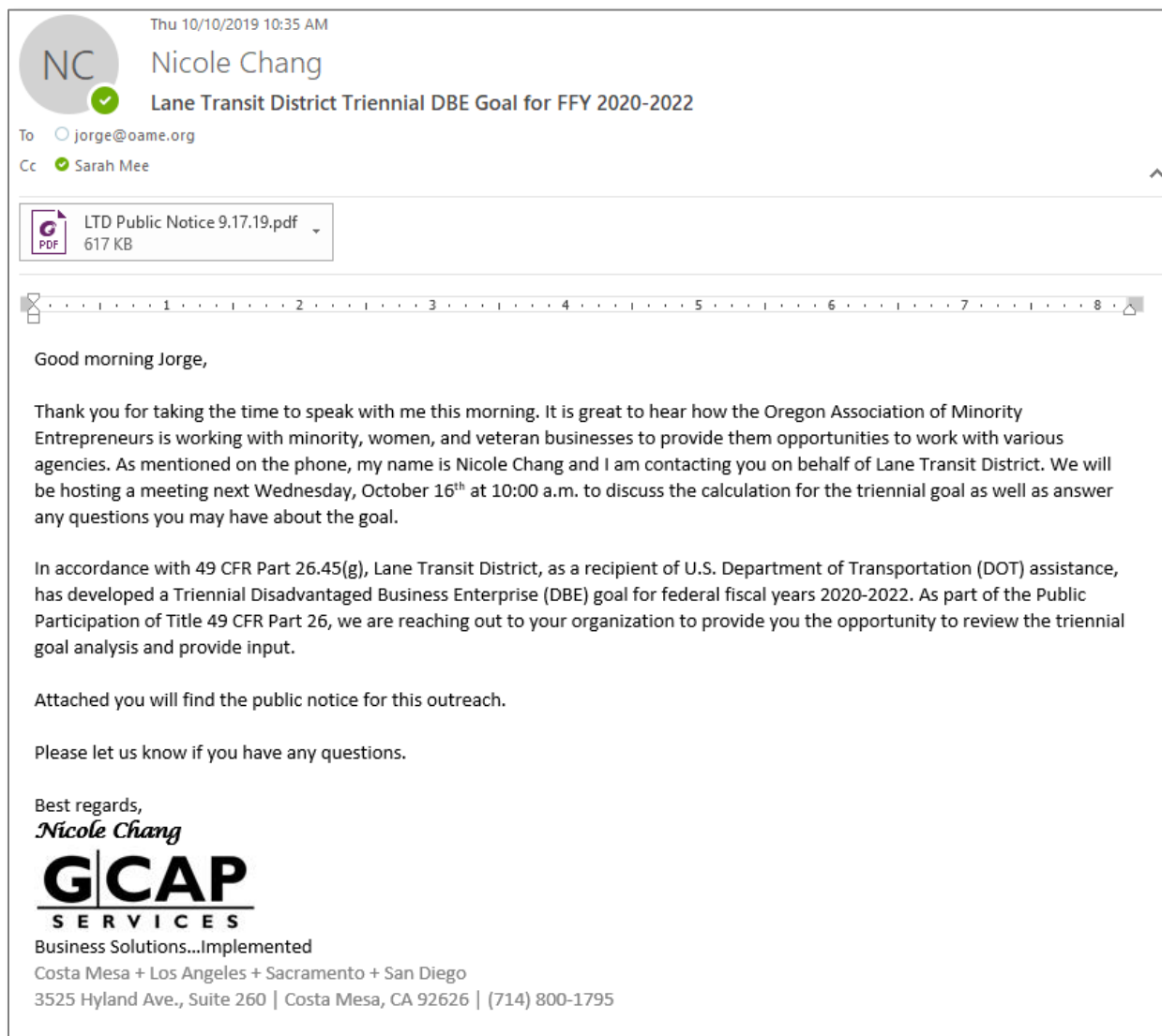
The methodology will be available for public inspection until October 25, 2019, Monday through Friday from 8:00 a.m. to 4:00 p.m. at the following location:

Lane Transit District – Administrative Offices
3500 East 17th Avenue
Eugene, OR 97403

The U.S. DOT and LTD will accept comments on this proposed goal until October 25, 2019.

For additional information on the LTD's Overall Disadvantaged Business Enterprise (DBE) Goal-Setting Methodology, please contact the LTD DBE Liaison Officer, Collina Beard, at the address above and/or via email at Collina.Beard@ltd.org.

ATTACHMENT 2: Sample of Emails and E-Blasts





Lane Transit District

Lane Transit District

Triennial DBE Goal FFY 2020-2022

In accordance with 49 CFR Part 26.45(g), Lane Transit District (LTD), a recipient of U.S. Department of Transportation assistance, announces proposed Federal Transit Administration (FTA) Disadvantaged Business Enterprise (DBE) goal for the triennial period October 1, 2019 through September 30, 2022. This goal represents the percentage of work anticipated to be performed by certified DBE firms on LTD's FTA-assisted projects during the triennial period.

2.9%

[View Public Notice](#)

Webinar TOMORROW

LTD will be hosting a webinar for public participation on:

**Wednesday, October 16th
at 10:00 a.m.**

[Register Here](#)

[Join Microsoft Teams Meeting](#)

+1 805-319-4492 United States, Santa Barbara (Toll)

Conference ID: 174 400 80#

AGENDA

Introduction

- Title 49 CFR Part 26
- Triennial Goal Period

DBE Goal Development

- Market Area
- Anticipated Projects
- Categories of Work
- DBE Base Figure
- Adjusted Goal

Next Steps

Unable to Attend?

Comments Accepted through October 25, 2019

LTD will be accepting comments to the overall DBE Goal-Setting Methodology for FFY 2020-2022 until October 25 2019. Please contact the LTD's DBE Liaison Officer, Collina Beard, via email at DBELO@ltd.org for additional information.

ATTACHMENT 3: Webinar PowerPoint Presentation



Lane Transit District

LANE TRANSIT DISTRICT

Federal Transit Administration (FTA)
Overall Disadvantaged Business Enterprise (DBE)
Goal-Setting Methodology
Federal Fiscal Years (FFY) 2020-2022

1

1

AGENDA

Introduction

- Title 49 CFR Part 26
- Triennial Goal Period


DBE Goal Development

- Market Area
- Anticipated Projects
- Categories of Work
- DBE Base Figure
- Adjusted Goal

Next Steps

2



 **INTRODUCTION**

TITLE 49 CFR PART 26

- Lane Transit District (LTD) complies with Title 49 Code of Federal Regulations Part 26 "Participation by Disadvantaged Business Enterprises in U.S. Department of Transportation Programs"

TRIENNIAL GOAL PERIOD

- Goal Setting Methodology goal FFY 2020-2022 (October 1, 2019 through September 30, 2022)

3

3



 **DBE GOAL DEVELOPMENT**

 **MARKET AREA**

 **ANTICIPATED PROJECTS**

 **CATEGORIZATION OF WORK**

 **DBE BASE FIGURE**

 **ADJUSTED GOAL**

4

4



MARKET AREA





LTD's Market Area

Benton, Coos, Curry, Douglas,
Josephine, Lane, and Linn Counties

- Market Area – the area in which the agency spends the substantial majority of its contracting dollars.
- Required to evaluate the availability of DBEs to perform on LTD FTA-assisted contracts.

5

5

ANTICIPATED FTA- ASSISTED PROJECTS FOR FFY 2020-2022

Total Estimated Project Cost	Estimated FTA \$ Share	Estimated FTA % Share
\$30,892,686	\$24,714,148	80.00%

Project Name and Description	Total Estimated Project Cost	Estimated FTA \$	Estimated FTA %
Passenger Boarding Improvements & Systems	\$600,000	\$480,000	80.0%
Facilities Improvements	\$8,291,714	\$6,633,371	80.0%
Santa Clara Transit Station	\$5,000,000	\$4,000,000	80.0%
Existing EmX Corridor Improvement	\$294,442	\$235,554	80.0%
Main-McVay Transit Study	\$1,114,454	\$891,563	80.0%
Frequent Transit Network Safety and Amenity Improvements	\$750,000	\$600,000	80.0%
Bus Wash Improvements	\$250,000	\$200,000	80.0%
Overhead Door Replacement	\$550,000	\$440,000	80.0%
Bus Gate Improvements	\$616,100	\$492,880	80.0%
ACM Replacements parts	\$11,900,000	\$9,520,000	80.0%
Preventive Maintenance	\$172,146	\$137,716	80.0%
Safe Routes to School Bike Ped Expansion	\$559,967	\$447,974	80.0%
Safe Routes to Schools Regional Program	\$416,352	\$333,081	80.0%
Transportation Options	\$186,359	\$149,087	80.0%
UO Gateway Project	\$90,852	\$72,682	80.0%
Safe Route To School Regional Bicycle Parking	\$100,300	\$80,240	80.0%
Mobility Management – Safe Route To School			

6

6

CATEGORIZATION OF WORK

A NAICS Code Category of Work	B Est. FTA \$ by NAICS	C Est. FTA % by NAICS
236220 Commercial and institutional building construction	\$5,290,667	21.4%
237310 Highway, street, and bridge construction	\$1,058,569	4.3%
238110 Poured concrete foundation and structure contractors	\$1,111,337	4.5%
238190 Other foundation, structure, and building exterior contractors	\$1,074,132	4.3%
238210 Electrical contractors and other wiring installation contractors	\$1,934,475	7.8%
238290 Other building equipment contractors	\$1,240,000	5.0%
238390 Other building finishing contractors	\$555,669	2.2%
238990 All other specialty trade contractors	\$1,111,337	4.5%
423120 Motor vehicle supplies and new parts merchant wholesalers	\$492,880	2.0%
541613 Marketing consulting services	\$553,383	2.2%
541690 Other scientific and technical consulting services	\$511,162	2.1%
541810 Advertising agencies	\$260,538	1.1%
561790 Other services to buildings and dwellings	\$952,000	3.9%
811111 General automotive repair	\$5,712,000	23.1%
811310 Commercial and industrial machinery and equipment (except automotive and electronic) repair and maintenance	\$2,856,000	11.6%
TOTAL	\$24,714,148	100.0%

7

7

DBE BASE FIGURE

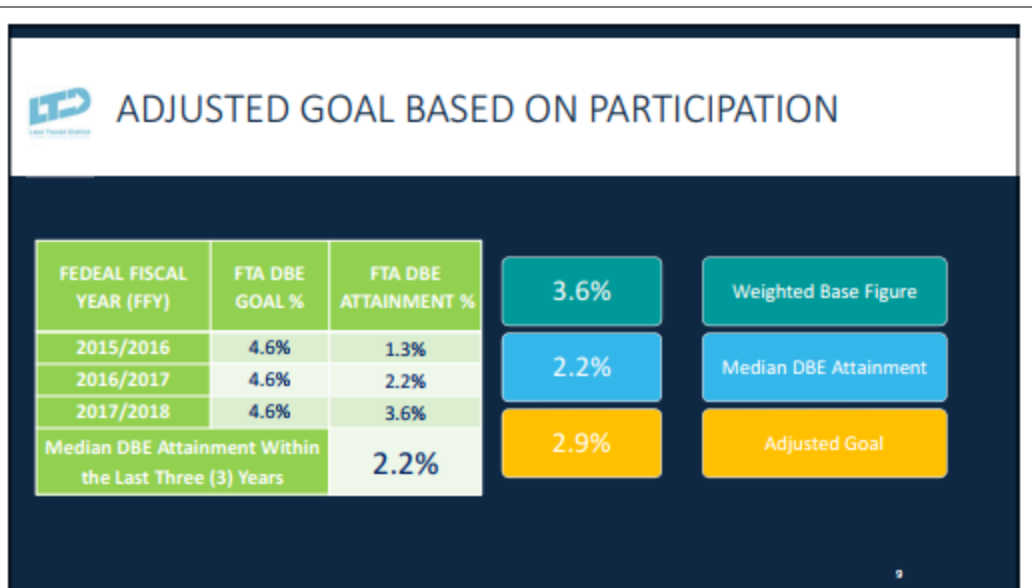


$$\text{Base Figure} = \sum \frac{(\text{Number of Ready, Willing, and Able DBEs})}{(\text{Number of All Ready, Willing, and Able Firms})} \times \text{Weighted Ratio}$$

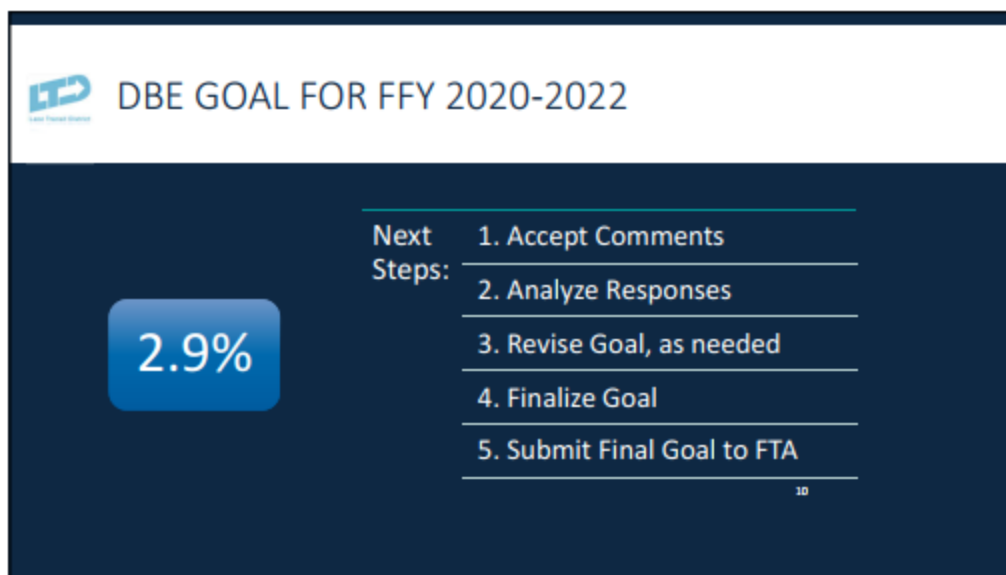
A Category of Work	B Est. FTA % by NAICS	C DBEs	D All Firms	E Weighted Ratio
236220 Commercial and institutional building construction	21.4%	2	86	0.5%
237310 Highway, street, and bridge construction	4.3%	6	51	0.5%
238110 Poured concrete foundation and structure contractors	4.5%	3	51	0.3%
238190 Other foundation, structure, and building exterior contractors	4.3%	2	7	1.2%
238210 Electrical contractors and other wiring installation contractors	7.8%	1	185	0.0%
238290 Other building equipment contractors	5.0%	0	19	0.0%
238390 Other building finishing contractors	2.2%	2	10	0.4%
238990 All other specialty trade contractors	4.5%	4	98	0.2%
423120 Motor vehicle supplies and new parts merchant wholesalers	2.0%	0	36	0.0%
541613 Marketing consulting services	2.2%	3	51	0.1%
541690 Other scientific and technical consulting services	2.1%	7	64	0.2%
541810 Advertising agencies	1.1%	2	21	0.1%
561790 Other services to buildings and dwellings	3.9%	0	34	0.0%
811111 General automotive repair	23.1%	0	252	0.0%
811310 Commercial and industrial machinery and equipment (except automotive and electronic) repair and maintenance	11.6%	0	65	0.0%

Weighted
Base Figure
3.6%


8



9





10


Lane Transit District

QUESTIONS?

Collina Beard, LTD DBE Liaison
Officer

 DBELO@ltd.org

 (541) 682-6158

11

ATTACHMENT 4: Consultative Process Summary

Organization	Notes	Comments
Hispanic Metropolitan Chamber Gale Castillo, Interim Executive Director 503-222-0280 gcastillo@hmccoregon.com; info@hmccoregon.com	9/27 Initial e-blast sent. 10/1 Follow-up e-blast sent. 10/3 Follow-up e-blast sent. 10/8 Follow-up e-blast sent. 10/10 Follow-up e-blast sent. 10/14 Follow-up e-blast sent. 10/15 Follow-up e-blast sent.	<p>10/10 Spoke with Gale Castillo. She found the goal to be "pitiful" and provided suggestions including recruiting DBEs to work on LTD's project, disseminate information about projects, review the DBE list and make calls to DBEs, hold meetings to discuss upcoming opportunities. She also offered her services as a chamber to help LTD increase DBE participation on their federally funded projects.</p> <p>LTD response: The FFY 2020-2022 Triennial DBE Goal was developed using the prescribed FTA methodology which calculates the relative availability of DBEs to perform work on the projects anticipated to be awarded. LTD appreciates Ms. Castillo's suggestions for utilizing more DBEs on LTD projects and LTD's revised race-neutral measures address this. LTD will solicit DBE participation by hosting and/or participating in DBE workshops and vendor fairs, using advertisements and other outreach methods for communicating contracting procedures as well as specific contract opportunities, and conducting "How to do Business with LTD" and DBE workshops. LTD will consider extending outreach efforts to include the local minority Chambers of Commerce and will encourage eligible Chamber members to apply for DBE certification.</p>

Organization	Notes	Comments
Native American Chamber James Alan Parker, ONAC Director of Operations 503-894-4525 jparker@onacc.org; support@onacc.org	9/27 Initial e-blast sent. 10/1 Follow-up e-blast sent. 10/3 Follow-up e-blast sent. 10/8 Follow-up e-blast sent. 10/10 Follow-up e-blast sent. 10/10 Spoke with James and provided him information about the upcoming webinar. He said he would like to review the information in more detail and will provide feedback after a more thorough review. 10/14 Follow-up e-blast sent. 10/15 Follow-up e-blast sent.	None received.
Oregon Association of Minority Entrepreneurs Jorge Guerra, President 503-249-7744 *website message https://oame.org/contact-oame/	9/27 Initial email submitted via website.10/1 Follow-up email submitted via website.10/10 Spoke with Jorge who is involved with the DBE program. He is interested in having his staff participate in the webinar. He requested that information about the webinar be provided to him for distribution to his staff (email: jorge@oame.org).	None received.
Native American Business Network - ONABEN Veronica Hix, Executive Director 800-297-0656 *website message http://onaben.org/contact/	9/27 Initial email submitted via website. 10/1 Follow-up email submitted via website. 10/10 Left voicemail. 10/10 Follow-up email submitted via website.	None received.
Women Entrepreneurs of Southern Oregon (WESO) Mary Fitzsimmons, President 541-779-2010 *website message https://www.wesoweb.org/	9/27 Initial email submitted via website. 10/1 Follow-up email submitted via website. 10/10 Left voicemail. 10/10 Follow-up email submitted via website.	None received.
Oregon Entrepreneurs Network Jim Coonan, Interim Executive Director 503-222-2270 503-780-4020 jimc@oen.org; info@oen.org	9/27 Initial e-blast sent. 10/1 Follow-up e-blast sent. 10/3 Follow-up e-blast sent. 10/8 Follow-up e-blast sent. 10/10 Follow-up e-blast sent. 10/10 Left voicemail. 10/14 Follow-up e-blast sent. 10/15 Follow-up e-blast sent.	None received.