



Lane Transit District

BUS TALK

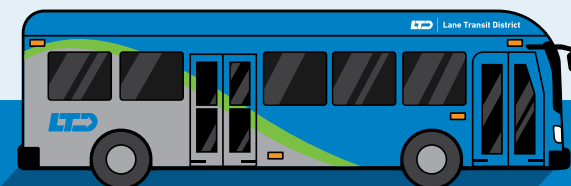
JUNE 2025

Inside this issue:

- **Holiday Service & Detours**
- **Get the Free Student Transit Pass**
- **Summer Service Changes**
- **There's a Lot to See on LTD**
- **June Events with LTD**
- **Performances at the Plaza**
- **Public Meetings**

**Get the Free Student Transit Pass
Before Summer Break!**

Visit your student's school office to get their pass.



Plan Ahead: Holiday Service & Summer Detours

Juneteenth
Thursday, June 19

Buses: Regular schedules

Customer Service Centers: Regular hours

Administrative Offices: Closed



Independence Day
Friday, July 4

Buses: Sunday schedules

Customer Service Centers:

Eugene, 9 a.m.–5 p.m.

Springfield, 9 a.m.–5 p.m.

(Springfield closed 1:00–1:30 p.m.)

Administrative Offices: Closed



Be Prepared for Summer Detours

Please note that there may be detours and delays due to upcoming events and construction.

Be sure to check the [Service Alerts](#) before you travel, or sign up for [Text Alerts](#) to stay informed!



Get the Free Student Transit Pass Before Summer Break

As the school year comes to an end, Lane Transit District wants to remind students to get their free Student Transit Pass before summer break. All K-12 students in public, private, charter, and home schools across Lane County are eligible for the Student Transit Pass program. Students and parents can visit their school's office to get an electronic tap card or information about how to use the Umo Mobility app to redeem a Student Transit Pass. Students must get their bus pass before the last day of school to continue riding the bus for free all summer long.

Questions about the Student Transit Pass? Stop by LTD's table at the [Willamalane Children's Celebration](#) on June 28 to learn more. If you didn't get your student's pass before summer break, LTD will issue limited quantities of passes at this event.

For more information about the [LTD Student Transit Pass](#), visit your school's office.

Summer Service Changes Begin Sunday, June 15

Starting Sunday, June 15, LTD will implement its Summer Service Change, with route and schedule updates designed to improve efficiency and better serve the needs of our community. Below is a summary of the upcoming changes:

Springfield Station – EmX Bays Switched

- The bus departing from Bay F will travel to Eugene Station. The bus departing from Bay G will travel to Gateway/Riverbend or Riverbend/Gateway.

Route 79x – UO/Kinsrow – Weekday

- This route does not operate from June 14 through September 14, 2025.
- This is a routine summer change.

Route 81 – LCC/Hilyard (Saturday Service)

- This route does not operate on Saturdays from June 15 through September 6, 2025.
- This is a routine summer change.

Route 82 – LCC/Pearl – Weekday

- This route will run fewer trips from June 14 to September 6, 2025.
- This is a routine summer change.

Check for any [service changes](#) affecting your route and review specific trip details to be prepared.

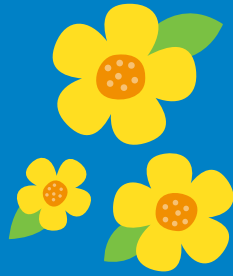
There's a Lot to See on LTD

Whether you're a visitor to our area or a Lane County resident, it's easy to hop on the bus and visit local attractions or leave the city behind to wander through the woods. Take any route to Eugene Station and travel to the Park Blocks at 8th and Oak for the Saturday Market. If you're looking for groceries, shopping and dining all in one place, take Route 12 or EmX to the Shoppes at Gateway. Find farms, country stores, restaurants, golfing, fishing, and more along Route 91 and the McKenzie River. Take Route 1, 66 or 67 to Skinner Butte for a quick hike and a panoramic view of the Eugene skyline. Savor and indulge at Oakway Center and Valley River Center by taking Route 66 or 67 for local shopping and dining venues. There's a lot to see when you ride LTD!

Visiting the area? Check out [LTD's Visitor Guide!](#)



June Events with LTD



Willamalane Children's Celebration

Saturday, June 28 • 10:00 AM – 2:00 PM

Island Park, Springfield

Bring the whole family out to enjoy where play and learning come together! Kids can hop aboard the beloved Willamalane train, explore hands-on activities, and take in live performances throughout the day. The event also features a wide variety of exhibitors and community partners offering resources and interactive experiences designed to inspire and support families. It's a great way to connect, explore, and celebrate together.

Get there by bus: Routes [11](#), [17](#), [18](#), [85](#), and [EmX](#)

2025 Performances at the Plaza

**Bonus
Pop-up
Events**
at select
times!

Rosa Parks Plaza at Eugene Station

Catch the rhythm this summer! There's no better way to kick off your weekend than with live music in the heart of downtown. [LTD's Summer Performances at the Plaza](#) return to Rosa Parks Plaza at Eugene Station, filling Friday afternoons with free live music, community vibes, and a celebration of local and global sounds. From June through mid-September, join us for this all-ages, transit-friendly concert series featuring some of the most talented performers in the region—with more to come!

Monday, June 23

12:00 – 1:15 PM

The Pan Wizards Steel Orchestra

Don't miss this high-energy midday treat. This elite youth steel orchestra showcases a powerhouse performance of calypso, classical, Afro-Cuban, pop, and more. Over 30 talented musicians bring Caribbean flavor and complex rhythms to the plaza.

Pop-Up Performance!



Public Meetings

LTD offers multiple ways to attend, watch and participate in LTD's public meetings. Attend in person at the LTD Administrative Office at 3500 East 17th Avenue, or watch the meetings via Zoom, on local channel 21, or stream on Eugene Metro TV's YouTube channel.

Board of Directors Meeting

Wednesday, June 18
5:30 p.m.

Please visit [LTD's public meeting schedule](#) for the most up-to-date calendar.

Find us on Social Media

Stay up-to-date on the latest news and announcements about LTD. Click on icons to follow or find them on the [LTD social media page](#).



[@LaneTransit.District](#)



[@Lane-Transit-District](#)



[@LaneTransit](#)



[Facebook.com/LaneTransit](#)



[@LaneTransitDistrict](#)