

**LANE TRANSIT DISTRICT**  
**February 2011 Performance Report**  
10-March-2011

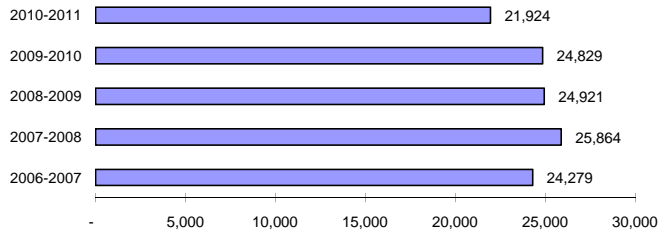
Performance Measure	Current Month	Prior Year's Month	% Change	Current Y-T-D	Previous Y-T-D	% Change	Current 12 Month	Prior 12 Month	% Change
<b>Fixed Route Service</b>									
Passenger Boardings	998,069	1,026,777	- 2.8%	7,133,802	7,346,855	- 2.9%	11,136,526	11,306,145	- 1.5%
Mobility Assisted Riders	8,165	9,671	- 15.6%	75,256	82,798	- 9.1%	117,978	124,217	- 5.0%
<u>Average Passenger Boardings:</u>									
Weekday	43,724	44,928	- 2.7%	36,591	37,878	- 3.4%	37,804	38,627	- 2.1%
Saturday	20,356	20,545	- 0.9%	17,448	17,774	- 1.8%	18,016	18,133	- 0.6%
Sunday	10,543	11,512	- 8.4%	9,872	9,825	+ 0.5%	9,961	10,343	- 3.7%
Monthly Scheduled Hours	21,924	24,828	- 11.7%	183,100	206,062	- 11.1%	288,633	312,333	- 7.6%
Boardings Per Schedule Hour	45.5	41.4	+ 10.1%	38.96	35.65	+ 9.3%	38.58	36.20	+ 6.6%
Weekly Schedule Hours	5,481	6,207	- 11.7%	5,379	6,098	- 11.8%	5,609	6,117	- 8.3%
Weekdays	20	20		170	169		257	255	
Saturdays	4	4		34	34		51	51	
Sundays	4	4		35	38		53	57	
<b>Special Services *</b>									
Passenger Boardings	-	1,371	- 100.0%	60,306	102,774	- 41.3%	61,916	104,288	- 40.6%
Scheduled Hours	-	60	- 100.0%	2,300	4,072	- 43.5%	2,367	4,162	- 43.1%
Boardings Per Schedule Hour	-	23.0	- 100.0%	26.2	25.2	+ 3.9%	26.2	25.1	+ 4.4%
<b>Passenger Revenues &amp; Sales</b>									
Total Passenger Revenues	\$667,325	\$650,535	+ 2.6%	\$4,873,869	\$4,598,322	+ 6.0%	\$7,306,347	\$6,845,115	+ 6.7%
Average Passenger Fare	\$0.669	\$0.634	+ 5.5%	\$0.68	\$0.63	+ 9.2%	\$0.66	\$0.61	+ 8.4%
Farebox Revenue									
Adult Pass	2,239	2,229	+ 0.4%	17,642	16,736	+ 5.4%	27,207	24,542	+ 10.9%
Youth Pass	121	126	- 4.0%	1,433	1,425	+ 0.6%	2,093	1,945	+ 7.6%
Reduced Fare Pass	1,022	1,018	+ 0.4%	8,513	8,462	+ 0.6%	13,001	12,824	+ 1.4%
Adult 3 Month Pass	47	45	+ 4.4%	522	472	+ 10.6%	807	741	+ 8.9%
Youth 3 Month Pass	3	11	- 72.7%	49	58	- 15.5%	59	71	- 16.9%
Reduced Fare 3 Month Pass	46	43	+ 7.0%	449	761	- 41.0%	741	1,298	- 42.9%
Regular Tokens	422	1,717	- 75.4%	5,061	22,798	- 77.8%	8,647	57,796	- 85.0%
Reduced Fare Tokens	9	5	+ 80.0%	99	82	+ 20.7%	118	138	- 14.5%
<b>Fleet Services</b>									
Fleet Miles	280,677	326,926	- 14.1%	2,377,933	2,707,809	- 12.2%	3,725,007	4,066,239	- 8.4%
Average Passenger Boardings/Mile	3.56	3.14	+ 13.2%	3.00	2.71	+ 10.6%	2.99	2.78	+ 7.5%
Fuel Cost	\$235,803	\$189,070	+ 24.7%	\$1,696,087	\$1,523,667	+ 11.3%	\$2,413,902	\$2,111,851	+ 14.3%
Fuel Cost Per Mile	\$0.840	\$0.578	+ 45.3%	\$0.713	\$0.563	+ 26.8%	\$0.648	\$0.519	+ 24.8%
Repair Costs	\$196,199	\$246,874	- 20.5%	\$1,639,418	\$1,663,499	- 1.4%	\$2,529,374	\$2,432,631	+ 4.0%
Total Repair Cost Per Mile	\$0.699	\$0.755	- 7.4%	\$0.689	\$0.614	+ 12.2%	\$0.679	\$0.598	+ 13.5%
Preventive Maintenance Costs	\$29,227	\$27,436	+ 6.5%	\$234,293	\$251,696	- 6.9%	\$379,924	\$375,474	+ 1.2%
Total PM Cost Per Mile	\$0.104	\$0.084	+ 24.1%	\$0.099	\$0.093	+ 6.0%	\$0.102	\$0.092	+ 10.5%
Mechanical Road Calls	90	97	- 7.2%	649	818	- 20.7%	995	1,224	- 18.7%
Miles/Mech. Road Call	3,119	3,370	- 7.5%	3,664	3,310	+ 10.7%	3,744	3,322	+ 12.7%

**Special Mobility Service**

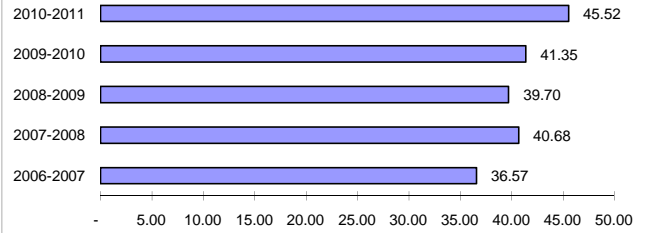
Data unavailable at time of printing

\* Special Services includes Football, Basketball, Oregon Country Fair, and Lane County Fair

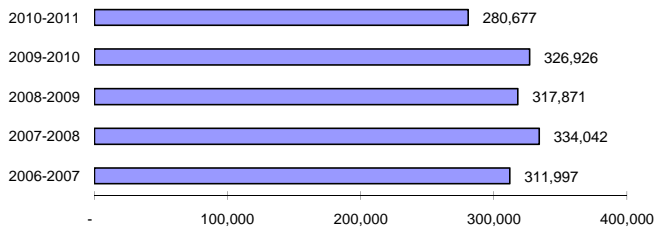
**February Schedule Hours**



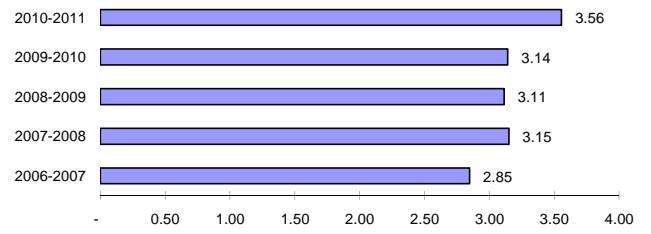
**February Passenger Boardings per Schedule Hour**



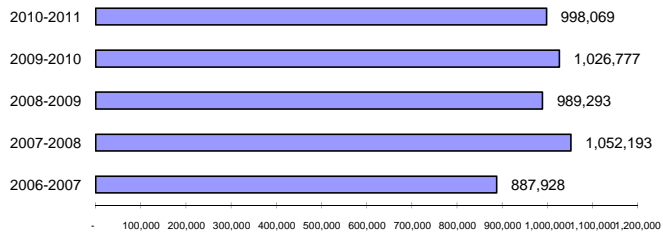
**February Fleet Miles**



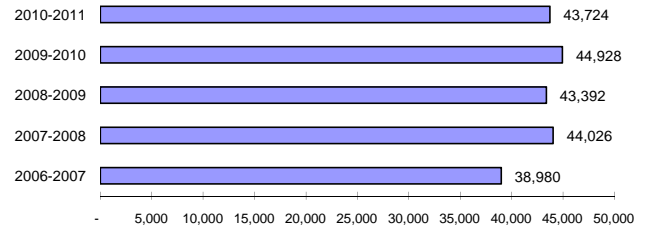
**February Passenger Boardings per Mile**



**February Passenger Boardings**

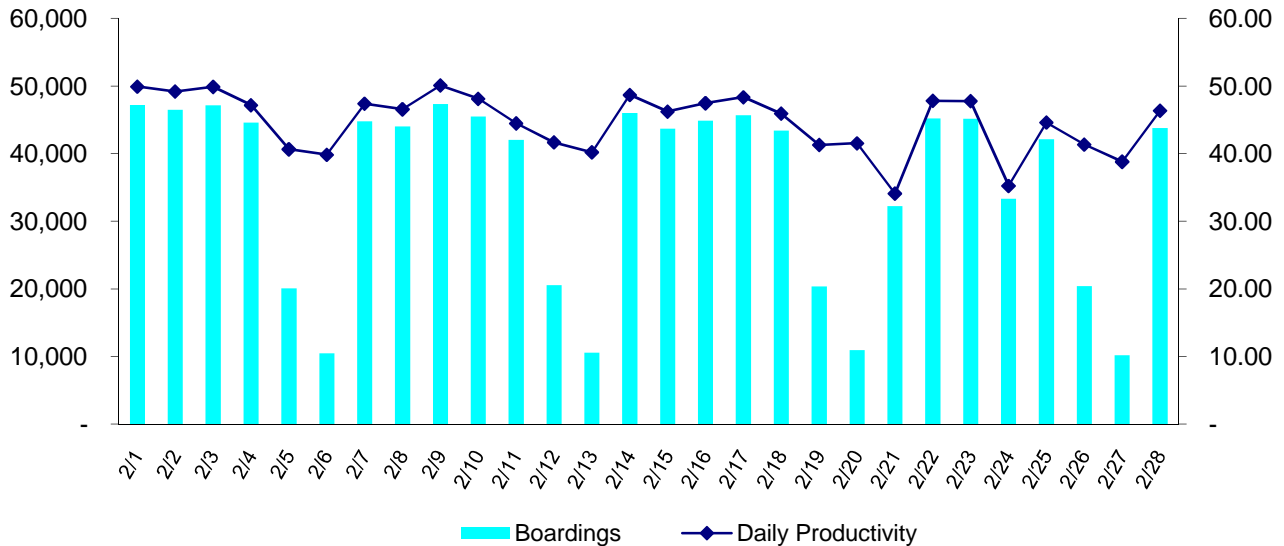


**February Average Weekday Passenger Boardings**



## Daily Ridership Recap February 2011

Date	Day	Service	Boardings	Mobility		Daily Productivity
				Assisted Boardings	Scheduled Hours	
2/1/2011	Tuesday	Weekday	47,176	359	944.90	49.93
2/2/2011	Wednesday	Weekday	46,478	347	944.90	49.19
2/3/2011	Thursday	Weekday	47,134	445	944.90	49.88
2/4/2011	Friday	Weekday	44,578	395	944.90	47.18
2/5/2011	Saturday	Saturday	20,064	244	493.50	40.66
2/6/2011	Sunday	Sunday	10,476	129	262.90	39.85
2/7/2011	Monday	Weekday	44,787	372	944.90	47.40
2/8/2011	Tuesday	Weekday	44,004	337	944.90	46.57
2/9/2011	Wednesday	Weekday	47,340	388	944.90	50.10
2/10/2011	Thursday	Weekday	45,473	452	944.90	48.12
2/11/2011	Friday	Weekday	42,036	386	944.90	44.49
2/12/2011	Saturday	Saturday	20,565	263	493.50	41.67
2/13/2011	Sunday	Sunday	10,568	100	262.90	40.20
2/14/2011	Monday	Weekday	46,015	334	944.90	48.70
2/15/2011	Tuesday	Weekday	43,686	254	944.90	46.23
2/16/2011	Wednesday	Weekday	44,854	283	944.90	47.47
2/17/2011	Thursday	Weekday	45,693	317	944.90	48.36
2/18/2011	Friday	Weekday	43,393	365	944.90	45.92
2/19/2011	Saturday	Saturday	20,381	260	493.50	41.30
2/20/2011	Sunday	Sunday	10,922	121	262.90	41.54
2/21/2011	Monday	Weekday	32,228	331	944.90	34.11
2/22/2011	Tuesday	Weekday	45,192	324	944.90	47.83
2/23/2011	Wednesday	Weekday	45,149	335	944.90	47.78
2/24/2011	Thursday	Weekday	33,309	187	944.90	35.25
2/25/2011	Friday	Weekday	42,146	301	944.90	44.60
2/26/2011	Saturday	Saturday	20,412	195	493.50	41.36
2/27/2011	Sunday	Sunday	10,204	103	262.90	38.81
2/28/2011	Monday	Weekday	43,806	238	944.90	46.36
<b>Totals</b>			<b>998,069</b>	<b>8,165</b>	<b>21,924</b>	<b>45.52</b>



# LANE TRANSIT DISTRICT

Five Year History of Passenger Boardings

