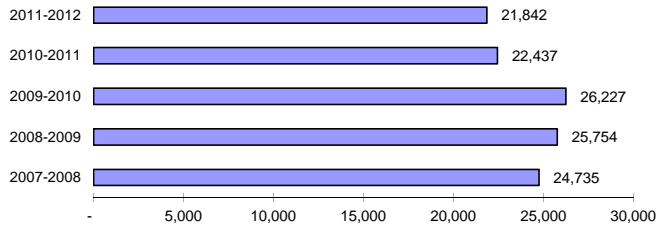


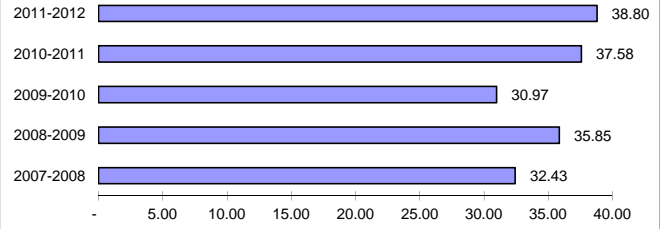
LANE TRANSIT DISTRICT
September 2011 Performance Report
13-October-2011

Performance Measure	Prior			Current			Previous		
	Current Month	Year's Month	% Change	Y-T-D	Y-T-D	% Change	12 Month	Prior 12 Month	% Change
Fixed Route Service									
Passenger Boardings	847,407	843,175	+ 0.5%	2,294,758	2,263,394	+ 1.4%	11,284,992	11,327,210	- 0.4%
Mobility Assisted Riders	10,575	10,644	- 0.6%	31,405	33,065	- 5.0%	110,173	126,546	- 12.9%
<u>Average Passenger Boardings:</u>									
Weekday	35,198	34,928	+ 0.8%	30,750	30,019	+ 2.4%	38,443	38,601	- 0.4%
Saturday	17,481	16,824	+ 3.9%	16,542	15,933	+ 3.8%	18,375	18,212	+ 0.9%
Sunday	9,580	10,599	- 9.6%	8,990	9,525	- 5.6%	9,793	10,176	- 3.8%
Monthly Scheduled Hours	21,842	22,437	- 2.7%	64,953	69,100	- 6.0%	272,487	304,446	- 10.5%
Boardings Per Schedule Hour	38.8	37.6	+ 3.2%	35.33	32.76	+ 7.9%	41.41	37.21	+ 11.3%
Weekly Schedule Hours	5,236	5,379	- 2.7%	5,064	5,348	- 5.3%	5,313	5,950	- 10.7%
Weekdays	21	21		64	64		257	255	
Saturdays	4	4		13	14		50	53	
Sundays	4	4		13	13		52	54	
Passenger Revenues & Sales									
Total Passenger Revenues	\$408,555	\$546,730	- 25.3%	\$1,416,984	\$1,606,084	- 11.8%	\$7,203,879	\$7,274,527	- 1.0%
Average Passenger Fare	\$0.482	\$0.648	- 25.6%	\$0.62	\$0.71	- 13.0%	\$0.64	\$0.64	- 0.6%
Farebox Revenue									
Adult Pass	2,063	2,138	- 3.5%	6,061	6,547	- 7.4%	26,534	26,798	- 1.0%
Youth Pass	261	150	+ 74.0%	715	782	- 8.6%	1,881	2,191	- 14.1%
Reduced Fare Pass	1,186	1,096	+ 8.2%	3,396	3,238	+ 4.9%	12,931	13,102	- 1.3%
Adult 3 Month Pass	80	79	+ 1.3%	186	193	- 3.6%	830	762	+ 8.9%
Youth 3 Month Pass	112	12	+ 833.3%	136	15	+ 806.7%	188	60	+ 213.3%
Reduced Fare 3 Month Pass	79	79	+ 0.0%	171	171	+ 0.0%	692	865	- 20.0%
Regular Tokens	420	815	- 48.5%	1,385	2,526	- 45.2%	5,552	15,132	- 63.3%
Reduced Fare Tokens	7	6	+ 16.7%	46	39	+ 17.9%	134	94	+ 42.6%
Fleet Services									
Fleet Miles	290,062	296,007	- 2.0%	852,655	903,583	- 5.6%	3,536,625	3,948,159	- 10.4%
Average Passenger Boardings/Mile	2.92	2.85	+ 2.6%	2.69	2.50	+ 7.4%	3.19	2.87	+ 11.2%
Fuel Cost	\$284,866	\$204,681	+ 39.2%	\$812,372	\$558,971	+ 45.3%	\$3,141,098	\$2,270,786	+ 38.3%
Fuel Cost Per Mile	\$0.982	\$0.691	+ 42.0%	\$0.953	\$0.619	+ 54.0%	\$0.888	\$0.575	+ 54.4%
Repair Costs	\$205,389	\$200,918	+ 2.2%	\$620,794	\$585,375	+ 6.1%	\$2,545,043	\$2,439,566	+ 4.3%
Total Repair Cost Per Mile	\$0.708	\$0.679	+ 4.3%	\$0.728	\$0.648	+ 12.4%	\$0.720	\$0.618	+ 16.5%
Preventive Maintenance Costs	\$26,432	\$24,666	+ 7.2%	\$88,740	\$87,593	+ 1.3%	\$371,430	\$393,900	- 5.7%
Total PM Cost Per Mile	\$0.091	\$0.083	+ 9.4%	\$0.104	\$0.097	+ 7.4%	\$0.105	\$0.100	+ 5.3%
Mechanical Road Calls	73	63	+ 15.9%	216	246	- 12.2%	980	1,117	- 12.3%
Miles/Mech. Road Call	3,973	4,699	- 15.4%	3,947	3,673	+ 7.5%	3,609	3,535	+ 2.1%
Special Mobility Service									
Data unavailable at time of printing									
SMS Rides	16,827	15,203	+ 10.7%	47,926	45,674	+ 4.9%	183,610	175,793	+ 4.4%
SMS Ride Refusals	-	-	+ 0.0%	-	2	- 100.0%	2	3	- 33.3%
RideSource	7,416	6,574	+ 12.8%	22,734	20,256	+ 12.2%	87,389	84,871	+ 3.0%
RideSource Refusals	-	-	+ 0.0%	-	-	#DIV/0!	2	1	+ 100.0%

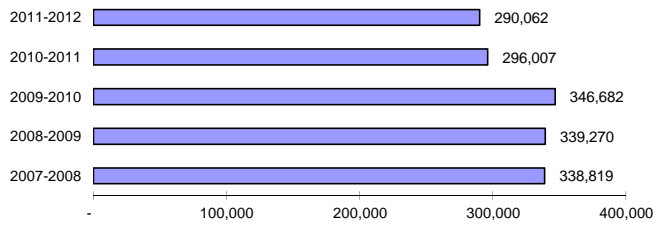
September Schedule Hours



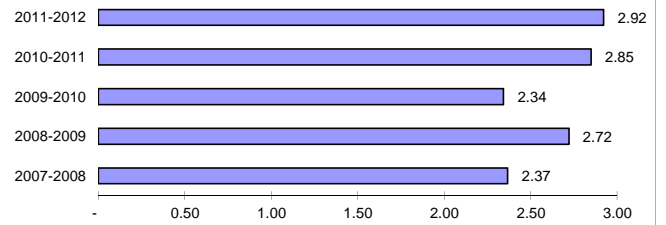
September Passenger Boardings per Schedule Hour



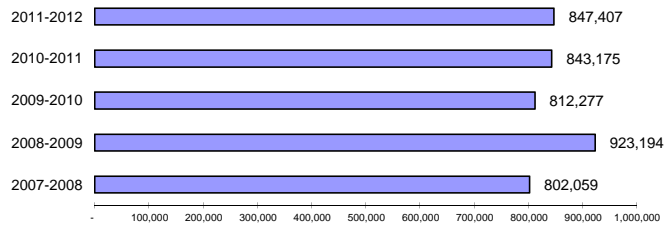
September Fleet Miles



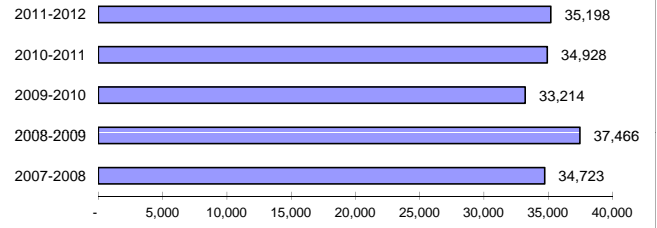
September Passenger Boardings per Mile



September Passenger Boardings

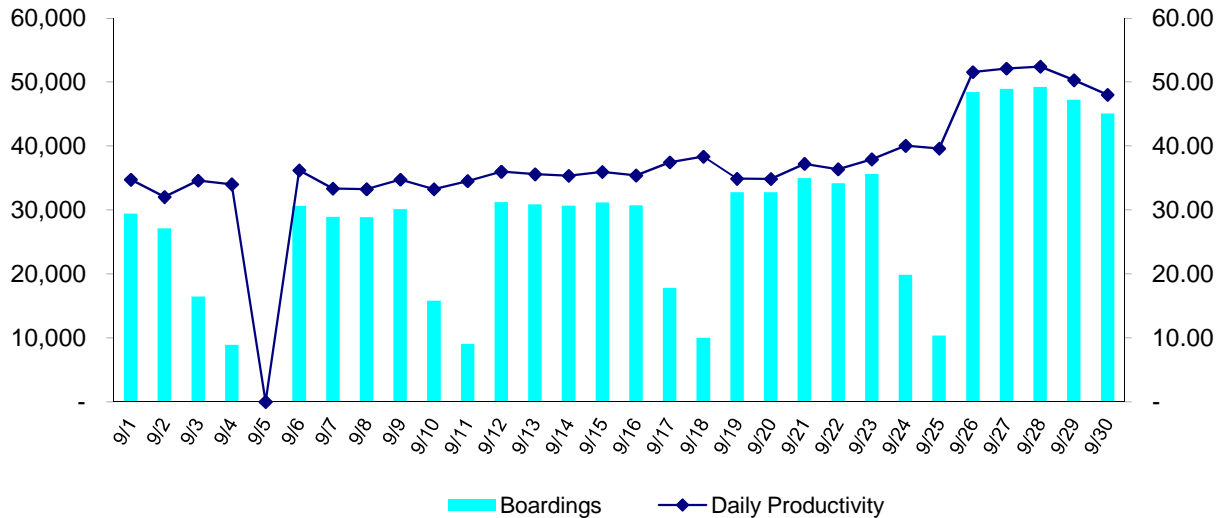


September Average Weekday Passenger Boardings



Daily Ridership Recap September 2011

Date	Day	Service	Boardings	Mobility		Daily Productivity
				Assisted Boardings	Scheduled Hours	
9/1/2011	Thursday	Weekday	29,405	491	846.40	34.74
9/2/2011	Friday	Weekday	27,114	480	846.40	32.03
9/3/2011	Saturday	Saturday	16,447	306	475.10	34.62
9/4/2011	Sunday	Sunday	8,911	190	261.90	34.02
9/5/2011	Monday	Closed	-	-	-	-
9/6/2011	Tuesday	Weekday	30,647	468	846.40	36.21
9/7/2011	Wednesday	Weekday	28,943	409	867.60	33.36
9/8/2011	Thursday	Weekday	28,863	382	867.60	33.27
9/9/2011	Friday	Weekday	30,154	410	867.60	34.76
9/10/2011	Saturday	Saturday	15,796	234	475.10	33.25
9/11/2011	Sunday	Sunday	9,043	141	261.90	34.53
9/12/2011	Monday	Weekday	31,228	417	867.60	35.99
9/13/2011	Tuesday	Weekday	30,877	383	867.60	35.59
9/14/2011	Wednesday	Weekday	30,681	458	867.60	35.36
9/15/2011	Thursday	Weekday	31,199	450	867.60	35.96
9/16/2011	Friday	Weekday	30,713	505	867.60	35.40
9/17/2011	Saturday	Saturday	17,800	236	475.10	37.47
9/18/2011	Sunday	Sunday	10,015	173	261.20	38.34
9/19/2011	Monday	Weekday	32,775	421	939.40	34.89
9/20/2011	Tuesday	Weekday	32,758	386	939.40	34.87
9/21/2011	Wednesday	Weekday	34,973	448	939.40	37.23
9/22/2011	Thursday	Weekday	34,175	348	939.40	36.38
9/23/2011	Friday	Weekday	35,629	391	939.40	37.93
9/24/2011	Saturday	Saturday	19,880	302	496.40	40.05
9/25/2011	Sunday	Sunday	10,351	108	261.20	39.63
9/26/2011	Monday	Weekday	48,443	346	939.40	51.57
9/27/2011	Tuesday	Weekday	48,973	381	939.40	52.13
9/28/2011	Wednesday	Weekday	49,248	450	939.40	52.42
9/29/2011	Thursday	Weekday	47,255	390	939.40	50.30
9/30/2011	Friday	Weekday	45,111	471	939.40	48.02
Totals			847,407	10,575	21,842	38.80



LANE TRANSIT DISTRICT

Five Year History of Passenger Boardings

