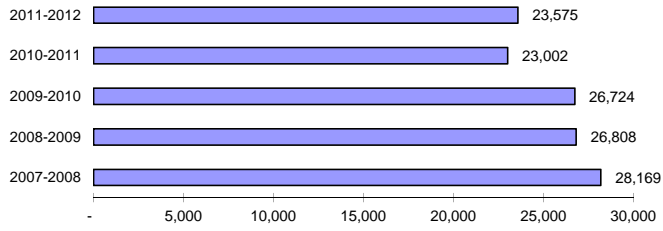


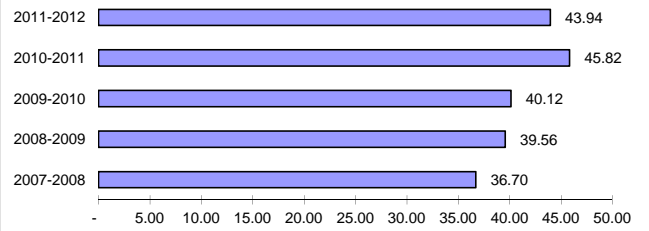
LANE TRANSIT DISTRICT
January 2012 Performance Report
13-February-2012

Performance Measure	Prior			Current			Previous		
	Current Month	Year's Month	% Change	Current Y-T-D	Previous Y-T-D	% Change	Current 12 Month	Prior 12 Month	% Change
Fixed Route Service									
Passenger Boardings	1,035,956	1,054,027	- 1.7%	6,241,760	6,135,733	+ 1.7%	11,359,655	11,165,234	+ 1.7%
Mobility Assisted Riders	8,670	7,900	+ 9.7%	69,658	67,091	+ 3.8%	114,400	119,484	- 4.3%
<u>Average Passenger Boardings:</u>									
Weekday	41,597	43,907	- 5.3%	36,366	35,572	+ 2.2%	38,724	37,904	+ 2.2%
Saturday	19,867	19,504	+ 1.9%	17,648	17,032	+ 3.6%	18,582	18,032	+ 3.0%
Sunday	10,338	10,791	- 4.2%	9,575	9,777	- 2.1%	9,809	10,042	- 2.3%
Monthly Scheduled Hours	23,575	23,002	+ 2.5%	157,790	161,176	- 2.1%	273,248	291,537	- 6.3%
Boardings Per Schedule Hour	43.9	45.8	- 4.1%	39.56	38.07	+ 3.9%	41.57	38.30	+ 8.6%
Weekly Schedule Hours	5,427	5,449	- 0.4%	5,267	5,364	- 1.8%	5,327	5,669	- 6.0%
Weekdays	22	21		149	150		256	257	
Saturdays	4	4		32	30		53	51	
Sundays	4	5		29	31		50	53	
Passenger Revenues & Sales									
Total Passenger Revenues	\$636,722	\$678,260	- 6.1%	\$3,807,210	\$4,206,360	- 9.5%	\$6,993,829	\$7,289,373	- 4.1%
Average Passenger Fare	\$0.615	\$0.643	- 4.5%	\$0.61	\$0.69	- 11.0%	\$0.62	\$0.65	- 5.7%
Farebox Revenue									
Adult Pass	2,094	2,273	- 7.9%	13,691	15,403	- 11.1%	25,308	27,197	- 6.9%
Youth Pass	1,111	128	+ 768.0%	4,916	1,312	+ 274.7%	5,552	2,098	+ 164.6%
Reduced Fare Pass	1,038	933	+ 11.3%	7,624	7,491	+ 1.8%	12,906	12,997	- 0.7%
Adult 3 Month Pass	86	77	+ 11.7%	662	475	+ 39.4%	1,024	805	+ 27.2%
Youth 3 Month Pass	143	16	+ 793.8%	540	46	+ 1073.9%	561	67	+ 737.3%
Reduced Fare 3 Month Pass	46	47	- 2.1%	391	403	- 3.0%	680	738	- 7.9%
Regular Tokens	324	663	- 51.1%	2,652	4,639	- 42.8%	4,706	9,942	- 52.7%
Reduced Fare Tokens	9	19	- 52.6%	81	90	- 10.0%	118	114	+ 3.5%
Fleet Services									
Fleet Miles	297,347	289,855	+ 2.6%	2,058,716	2,097,256	- 1.8%	3,549,013	3,771,256	- 5.9%
Average Passenger Boardings/Mile	3.48	3.64	- 4.2%	3.03	2.93	+ 3.6%	3.20	2.96	+ 8.1%
Fuel Cost	\$259,659	\$233,800	+ 11.1%	\$1,919,638	\$1,460,284	+ 31.5%	\$3,347,051	\$2,367,169	+ 41.4%
Fuel Cost Per Mile	\$0.873	\$0.807	+ 8.3%	\$0.932	\$0.696	+ 33.9%	\$0.943	\$0.628	+ 50.2%
Repair Costs	\$215,716	\$210,860	+ 2.3%	\$1,474,416	\$1,443,219	+ 2.2%	\$2,542,125	\$2,580,049	- 1.5%
Total Repair Cost Per Mile	\$0.725	\$0.727	- 0.3%	\$0.716	\$0.688	+ 4.1%	\$0.716	\$0.684	+ 4.7%
Preventive Maintenance Costs	\$34,883	\$29,742	+ 17.3%	\$224,107	\$205,066	+ 9.3%	\$389,324	\$378,133	+ 3.0%
Total PM Cost Per Mile	\$0.117	\$0.103	+ 14.3%	\$0.109	\$0.098	+ 11.3%	\$0.110	\$0.100	+ 9.4%
Mechanical Road Calls	73	72	+ 1.4%	521	559	- 6.8%	972	1,002	- 3.0%
Miles/Mech. Road Call	4,073	4,026	+ 1.2%	3,951	3,752	+ 5.3%	3,651	3,764	- 3.0%
Special Mobility Service									
SMS Rides	15,771	13,197	+ 19.5%	111,174	103,827	+ 7.1%	188,705	180,045	+ 4.8%
SMS Ride Refusals	-	-	+ 0.0%	-	4	- 100.0%	-	5	- 100.0%
RideSource	7,461	7,077	+ 5.4%	53,184	48,219	+ 10.3%	89,876	83,916	+ 7.1%
RideSource Refusals	-	-	+ 0.0%	-	2	- 100.0%	-	3	- 100.0%

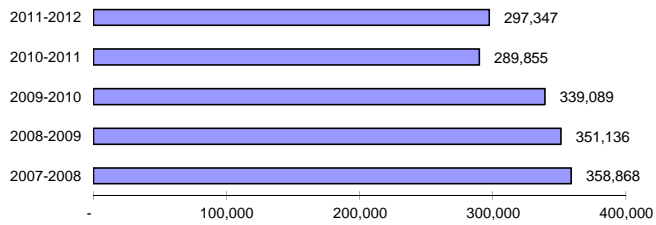
January Schedule Hours



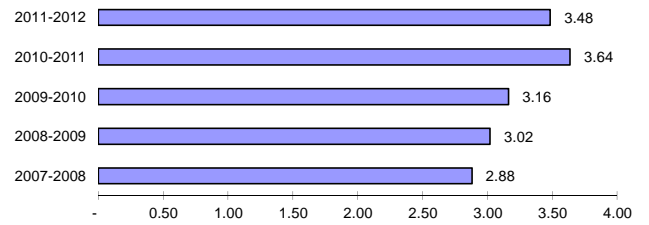
January Passenger Boardings per Schedule Hour



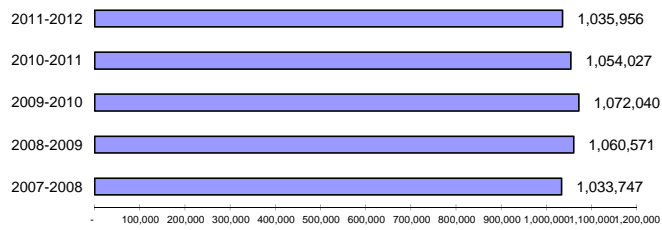
January Fleet Miles



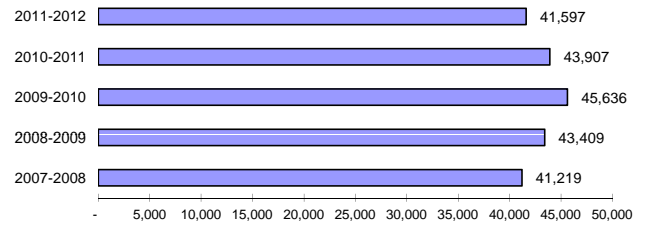
January Passenger Boardings per Mile



January Passenger Boardings

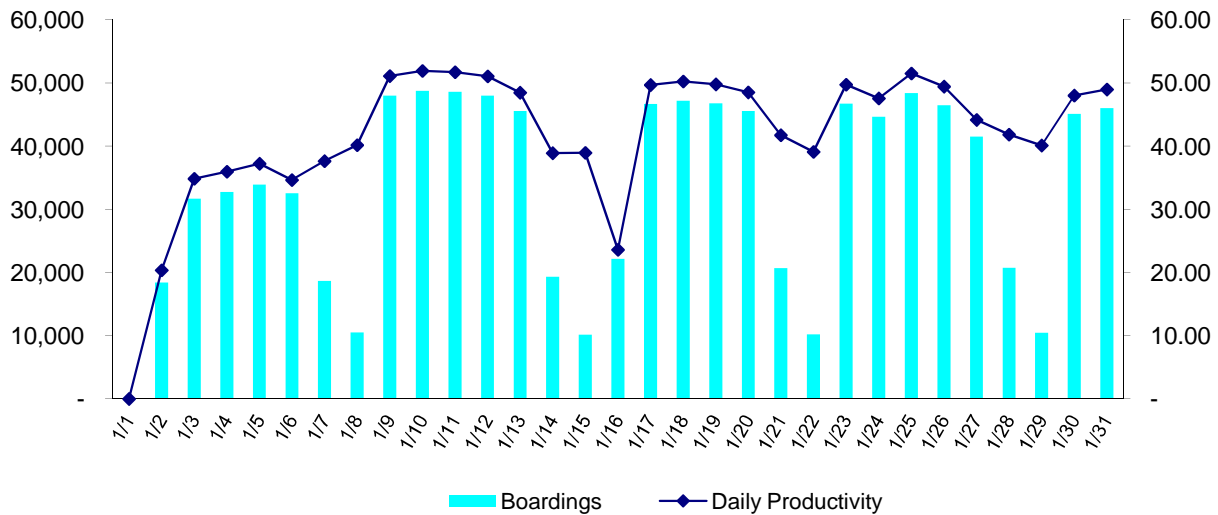


January Average Weekday Passenger Boardings



Daily Ridership Recap January 2012

Date	Day	Service	Boardings	Mobility		Daily Productivity
				Assisted Boardings	Scheduled Hours	
1/1/2012	Sunday	Closed	-	-	-	-
1/2/2012	Monday	Weekday	18,403	202	904.00	20.36
1/3/2012	Tuesday	Weekday	31,700	497	910.30	34.82
1/4/2012	Wednesday	Weekday	32,736	434	910.30	35.96
1/5/2012	Thursday	Weekday	33,893	332	910.30	37.23
1/6/2012	Friday	Weekday	32,521	356	939.40	34.62
1/7/2012	Saturday	Saturday	18,676	313	496.40	37.62
1/8/2012	Sunday	Sunday	10,494	127	261.20	40.18
1/9/2012	Monday	Weekday	47,998	406	939.40	51.09
1/10/2012	Tuesday	Weekday	48,738	363	939.40	51.88
1/11/2012	Wednesday	Weekday	48,573	370	939.40	51.71
1/12/2012	Thursday	Weekday	47,965	330	939.40	51.06
1/13/2012	Friday	Weekday	45,535	364	939.40	48.47
1/14/2012	Saturday	Saturday	19,306	226	496.40	38.89
1/15/2012	Sunday	Sunday	10,167	71	261.20	38.92
1/16/2012	Monday	Weekday	22,181	140	939.40	23.61
1/17/2012	Tuesday	Weekday	46,653	253	939.40	49.66
1/18/2012	Wednesday	Weekday	47,168	265	939.40	50.21
1/19/2012	Thursday	Weekday	46,759	264	939.40	49.78
1/20/2012	Friday	Weekday	45,573	332	939.40	48.51
1/21/2012	Saturday	Saturday	20,718	208	496.40	41.74
1/22/2012	Sunday	Sunday	10,210	133	261.20	39.09
1/23/2012	Monday	Weekday	46,706	357	939.40	49.72
1/24/2012	Tuesday	Weekday	44,653	273	939.40	47.53
1/25/2012	Wednesday	Weekday	48,359	348	939.40	51.48
1/26/2012	Thursday	Weekday	46,437	355	939.40	49.43
1/27/2012	Friday	Weekday	41,484	364	939.40	44.16
1/28/2012	Saturday	Saturday	20,766	203	496.40	41.83
1/29/2012	Sunday	Sunday	10,479	111	261.20	40.12
1/30/2012	Monday	Weekday	45,117	313	939.40	48.03
1/31/2012	Tuesday	Weekday	45,988	360	939.40	48.95
Totals			1,035,956	8,670	23,575	43.94



LANE TRANSIT DISTRICT

Five Year History of Passenger Boardings

